

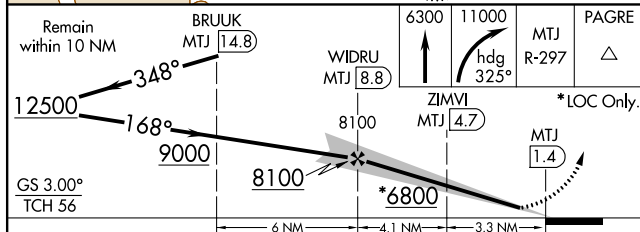
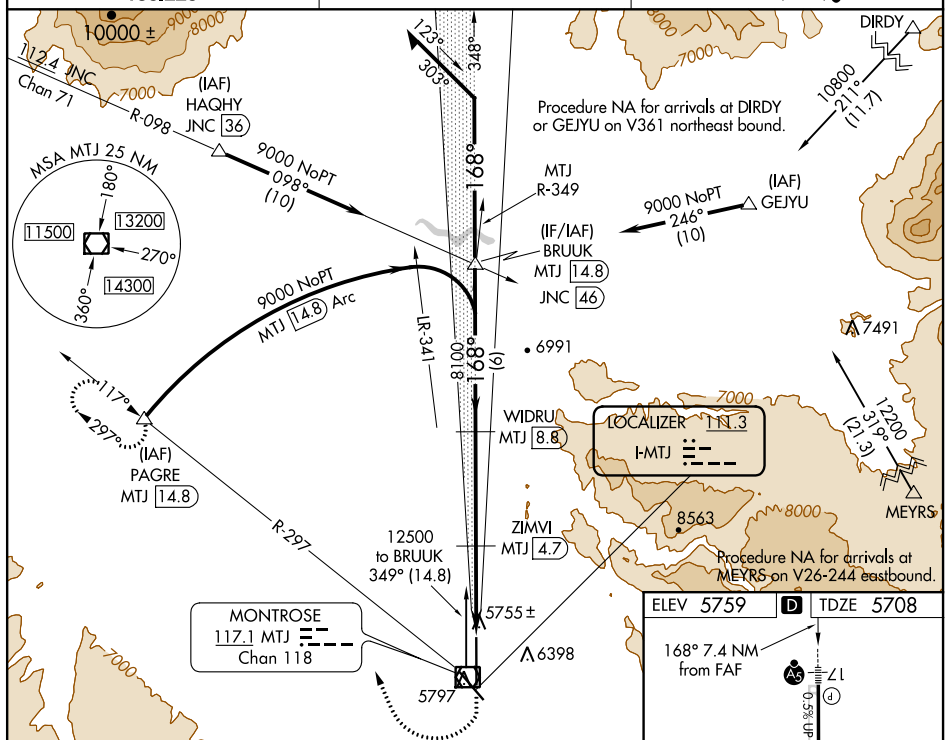
ILS or LOC RWY 17
MONTROSE RGNL (MTJ)


MALSR

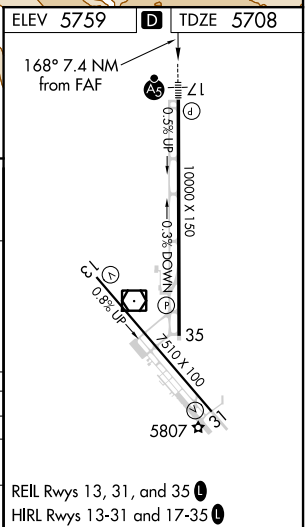
A5

T

MISSED APPROACH: Climb to 6300 then climbing right turn to 11000 on heading 325° and MTJ VOR/DME R-297 to PAGRE/MTJ 14.8 DME and hold, continue climb-in-hold to 11000.

UNICOM
122.8 (CTAF) **L**

CATEGORY	A	B	C	D
S-ILS 17		5908-½	200 (200-½)	
S-LOC 17		6020-½	312 (300-½)	
 CIRCLING	6280-1 521 (600-1)	6320-1 561 (600-1)	6380-1¼ 621 (700-1¾)	6800-3 1041 (1100-3)



SW-1, 03 DEC 2020 to 31 DEC 2020