

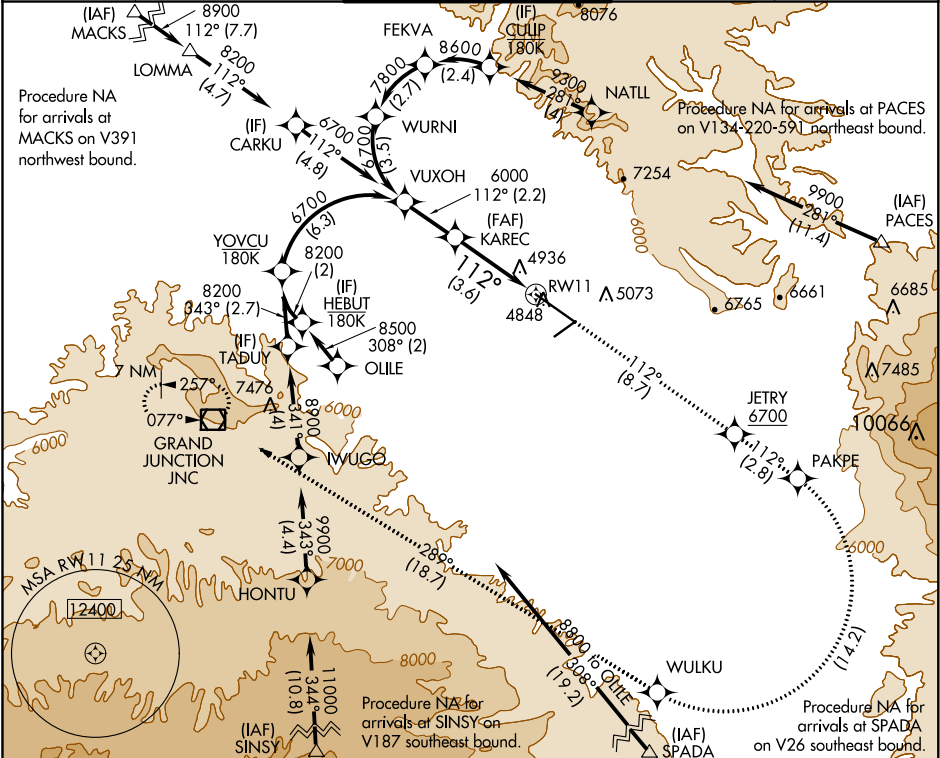
APP CRS	Rwy Idg	10503
112°	TDZE	4833
	Apf Elev	4858

RNAV (RNP) Z RWY 11

GRAND JUNCTION RGNL (GJT)

<p>RF and GPS required. For uncompensated Baro-VNAV systems, procedure NA below -21°C (-6°F) or above 38°C (101°F). For inoperative MALSR, increase RNP 0.10 all Cats visibility to 1¾ miles, and RNP 0.30 all Cats visibility to 1¾ miles.</p>	<p>MALSR</p> <p></p>	<p>MISSED APPROACH: Climb to 9000 on track 112° to JETRY, cross JETRY at or above 6700, and on track 112° to PAKPE, right turn to WULKU, and on track 289° to JNC VOR/DME and hold.</p>
--	-----------------------------	--

ATIS 118.55	DENVER APP CON * 119.7 317.4	GRAND JUNCTION TOWER * 118.1 (CTAF) 257.8	GND CON 121.7 257.8	UNICOM 122.95
-----------------------	--	--	-------------------------------	-------------------------



<p>VUXOH</p> <p>9000</p> <p>tr 112°</p> <p>6700</p> <p>GP 3.00° TCH 50</p> <p>VGSI and RNAV glidepath not coincident (VGSI Angle 3.00/TCH 51).</p> <p>2.2 NM</p> <p>3.6 NM</p> <p>See Planview for multiple IF locations.</p> <p>RW11</p>	<p>JETRY</p> <p>6700</p> <p>tr 112°</p> <p>6000</p> <p>KAREC</p> <p>6000</p>	<p>PAKPE</p> <p>tr 112°</p>	<p>WULKU</p> <p>tr 289°</p>	<p>JNC</p> <p>tr 289°</p>	<p>ELEV 4858</p> <p>TDZE 4833</p> <p>112° to RW11</p> <p>0.4% UP</p> <p>0.3% DOWN</p> <p>1.3% UP</p> <p>5501 X 75</p> <p>TWR 4945</p> <p>HIRL Rwy 11-29</p> <p>MIRL Rwy 4-22</p> <p>REIL Rws 4, 22 and 29</p>
CATEGORY	A	B	C	D	
RNP 0.10 DA		5254/50	421 (400-1)		
RNP 0.30 DA		5366-1 ¾	533 (500-1¾)		
AUTHORIZATION REQUIRED					

SW-1, 03 DEC 2020 to 31 DEC 2020

SW-1, 03 DEC 2020 to 31 DEC 2020