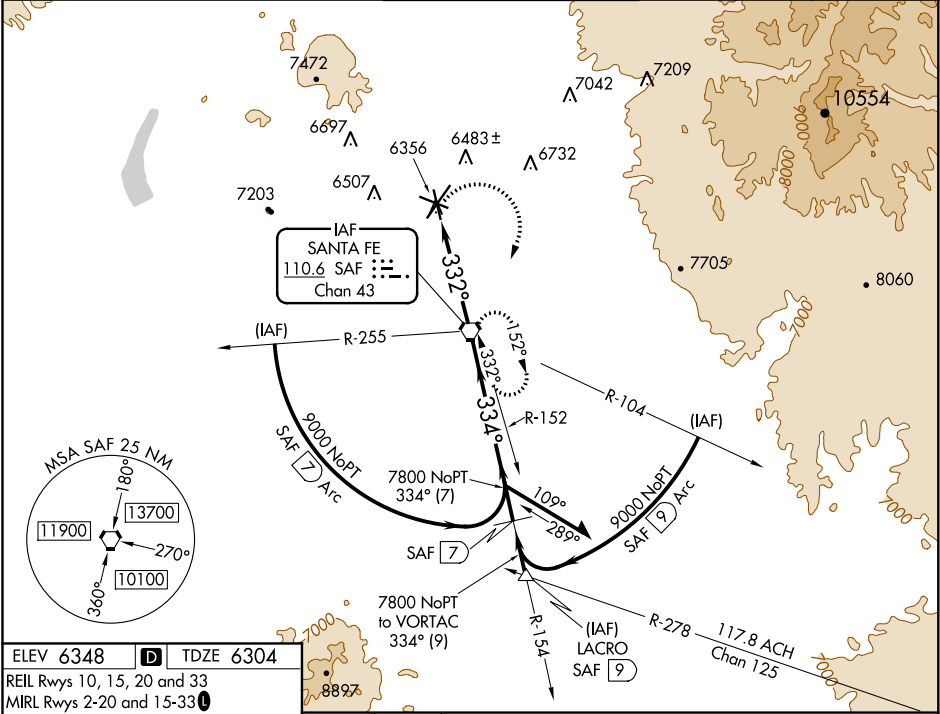


VORTAC SAF 110.6 Chan 43	APP CRS 332°	Rwy Idg TDZE Apt Elev 6316 6304 6348
--	------------------------	--

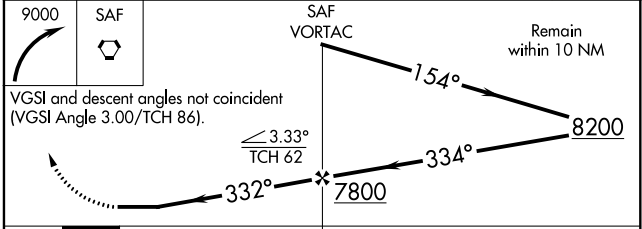
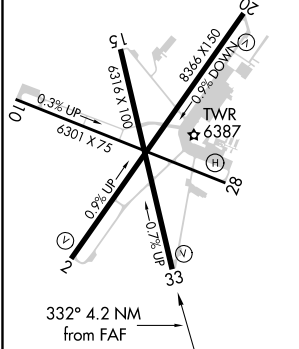
VOR RWY 33
SANTA FE MUNI (SAF)

<p>⚠ When Control Tower closed, except for operators with approved weather reporting service, use Albuquerque altimeter setting.</p>	<p>MISSED APPROACH: Climbing right turn to 9000 direct SAF VORTAC and hold, continue climb-in-hold to 9000.</p>
---	---

ATIS 128.55	ALBUQUERQUE CENTER 132.8 346.35	SANTA FE TOWER★ 119.5 (CTAF) 239.3	GND CON 121.7	UNICOM 122.95
-----------------------	---	--	-------------------------	-------------------------



ELEV 6348	D	TDZE 6304
REIL Rwy 10, 15, 20 and 33		
MIRL Rwy 2-20 and 15-33		
MIRL Rwy 10-28		



CATEGORY	A	B	C	D
S-33	6720-1	416 (400-1)	6720-1¼	416 (400-1¼)
CIRCLING	6840-1 492 (500-1)	6860-1 512 (600-1)	6860-1½ 512 (600-1½)	7020-2¼ 672 (700-2¼)
ALBUQUERQUE ALTIMETER SETTING MINIMUMS				
S-33	7620-1¼ 1316 (1300-1¼)	7620-1½ 1316 (1300-1½)	7620-3	1316 (1300-3)
CIRCLING	NA			

SW-1, 03 DEC 2020 to 31 DEC 2020

SW-1, 03 DEC 2020 to 31 DEC 2020