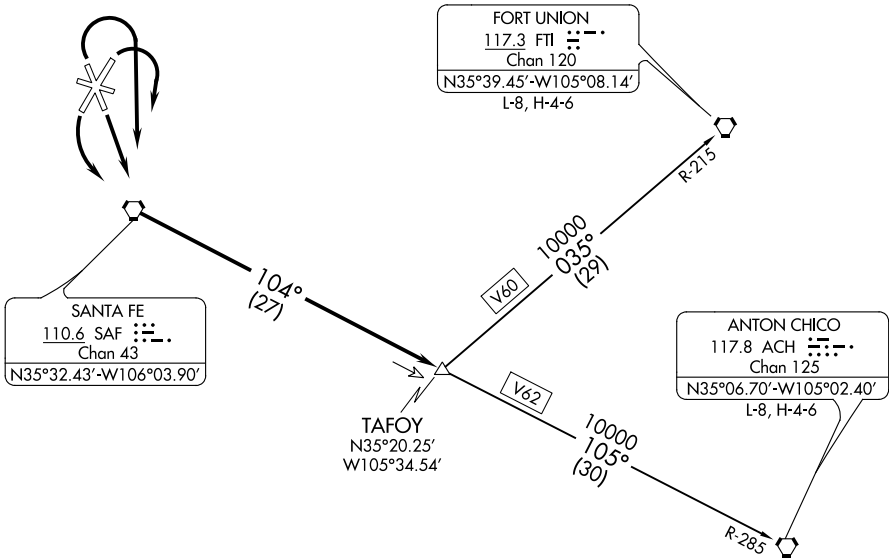


ATIS 128.55  
GND CON  
121.7  
SANTA FE TOWER★  
119.5 (CTAF) 239.3  
ALBUQUERQUE CENTER  
132.8 346.35



CAUTION: Mountainous terrain all quadrants.

NOTE: Takeoff runways 2, 33: Cat. A, B standard;  
Cat. C, D requires a minimum climb of 330'/NM until  
passing 9800' or a 2900' ceiling and 3 miles visibility.

NOTE: Chart not to scale.



DEPARTURE ROUTE DESCRIPTION

TAKEOFF RUNWAY 15: Climb direct to....  
TAKEOFF RUNWAY 20: Climbing left turn direct to....  
TAKEOFF RUNWAYS 2 & 33: Climbing right turn direct to....  
....the SAF VORTAC. Proceed via the SAF R-104 to TAFOY INT, climb and  
maintain 10000 MSL. Thence via assigned (transition) or (route).  
ANTON CHICO TRANSITION (TAFOY2.ACH): From over TAFOY INT, via V62/  
ACH R-285 to ACH VORTAC. Thence via (assigned) route.  
FORT UNION TRANSITION (TAFOY2.FTI): From over TAFOY INT via V60/FTI  
R-215 to FTI VORTAC. Thence via (assigned) route.