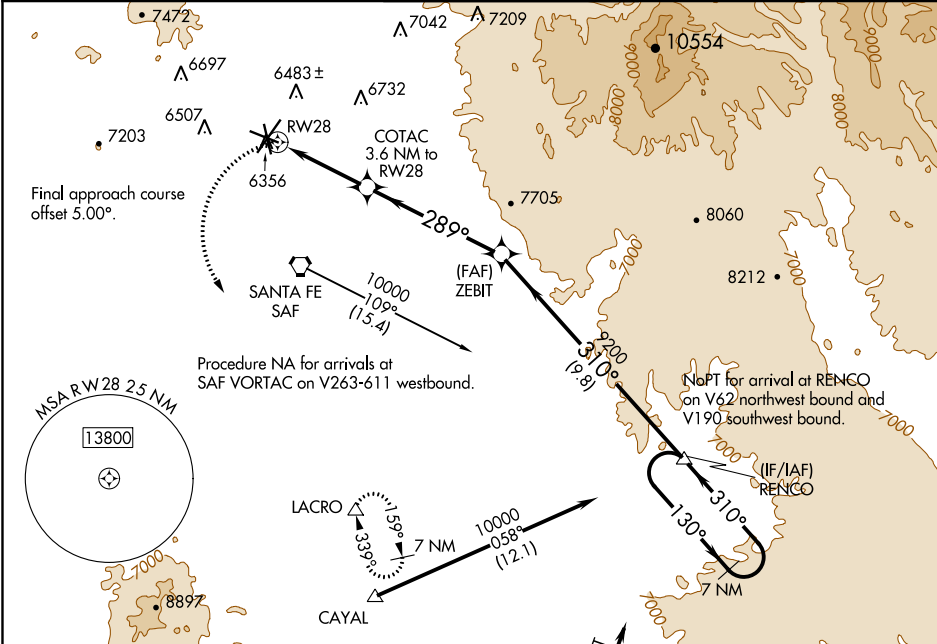


APP CRS	Rwy Idg	6301
289°	TDZE	6307
	Apt Elev	6349

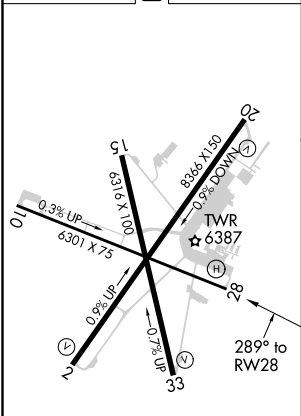
RNAV (GPS) RWY 28  
SANTA FE MUNI (SAF)

	DME/DME RNP-0.3 NA.	MISSED APPROACH: Climbing left turn to 9200 direct LACRO and hold.
--	---------------------	--

ATIS 128.55	ALBUQUERQUE CENTER 132.8 346.35	SANTA FE TOWER ★ 119.5 (CTAF) 239.3	GND CON 121.7	UNICOM 122.95
----------------	------------------------------------	--	------------------	------------------



ELEV 6349	D	TDZE 6307
-----------	---	-----------



REIL Rwy 10, 15, 20 and 33  
MIRL Rwy 2-20 and 15-33  
MIRL Rwy 10-28

9200	LACRO	ZEBIT	RENCQ	7 NM Holding Pattern
	COTAC 3.6 NM to RW28			
	1.9 NM to RW28			
	1.9 1.7 NM	5.4 NM	9.8 NM	
CATEGORY	A	B	C	D
LNAV MDA	6960-1	653 (700-1)	6960-1 $\frac{7}{8}$	653 (700-1 $\frac{7}{8}$ )
CIRCLING	6960-1	611 (700-1)	7340-3 991 (1000-3)	7660-3 1311 (1400-3)

SW-1, 03 DEC 2020 to 31 DEC 2020

SW-1, 03 DEC 2020 to 31 DEC 2020