

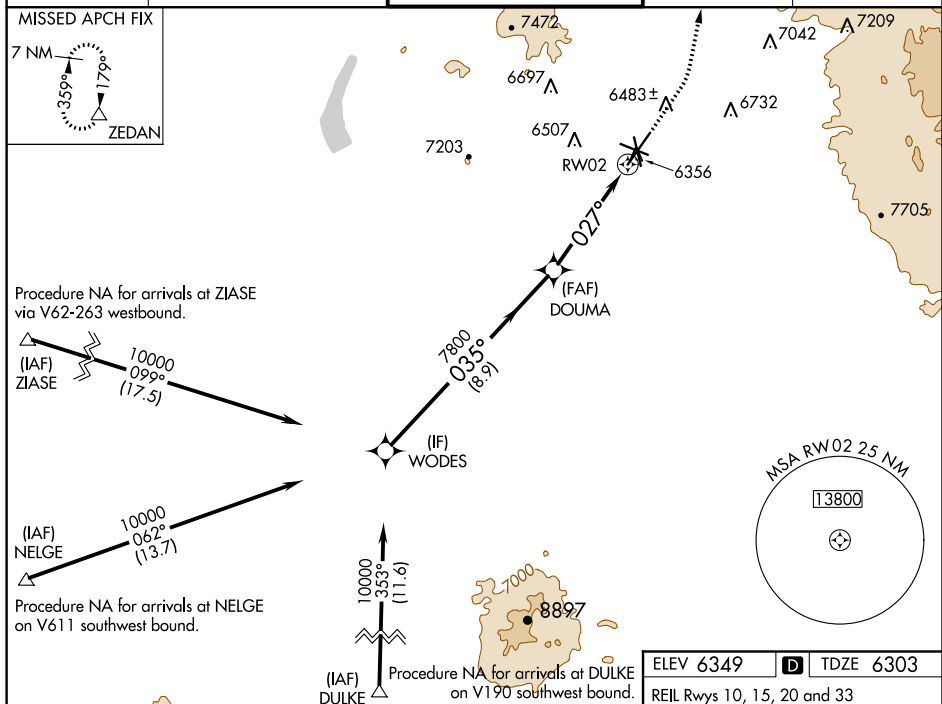
WAAS CH 63039 W02A	APP CRS 027°	Rwy Idg 8366 TDZE 6303 Apt Elev 6349
--	------------------------	---

RNAV (GPS) RWY 2
SANTA FE MUNI. (SAF)

T For uncompensated Baro-VNAV systems, LNAV/VNAV NA below
A -18°C (0°F) or above 45°C (113°F). DME/DME RNP-0.3 NA.

MISSED APPROACH: Climb to 7300 then climbing left turn to 11000 direct ZEDAN and hold.

ATIS 128.55	ALBUQUERQUE CENTER 132.8 346.35	SANTA FE TOWER ★ 119.5 (CTAF) 0 239.3	GND CON 121.7	UNICOM 122.95
-----------------------	---	---	-------------------------	-------------------------



VGSI and RNAV glidepath not coincident (VGSI Angle 3.00/TCH 69).

WODES 10000 035° DOUMA 7800 027° RW02

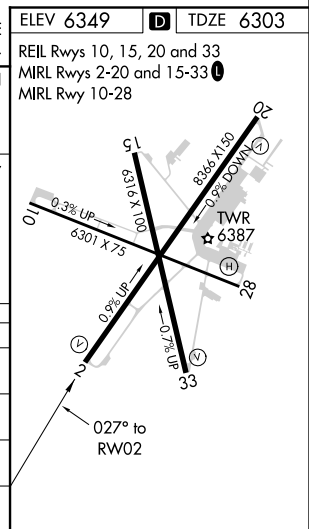
GP 3.00° TCH 53

8.9 NM 3.4 NM 1.2 NM

*1.2 NM to RW02

*LNAV only

CATEGORY	A	B	C	D
LPV DA	6503-3/4 200 (200-3/4)			
LNAV/VNAV DA	6553-7/8 250 (300-7/8)			
LNAV MDA	6740-1 437 (400-1)	6740-1 1/4 437 (400-1 1/4)		
CIRCLING	6800-1 451 (500-1)	6920-1 571 (600-1)	7340-3 991 (1000-3)	7660-3 1311 (1400-3)



SW-1, 03 DEC 2020 to 31 DEC 2020