

ATIS

1119.675 259.3

CLINC DEL

121.6 275

DENVER DEP CON

128 45 251 075

**TOP ALTITUDE:
ASSIGNED BY ATC**

MEEKER
115.2 EKR $\dot{\div} \dot{\div} \dot{\div}$
Chan 99

KREMLING
113.8 RLG 
Chan 85
N40°00.16'-W106°26.55'

RIFLE
110.6 RIL :--:
Chan 43
N39°31.70' - W107°43.18'

RED TABLE
113.0 DBL 
Chan 77
N39°26.36'-W106°53.68'

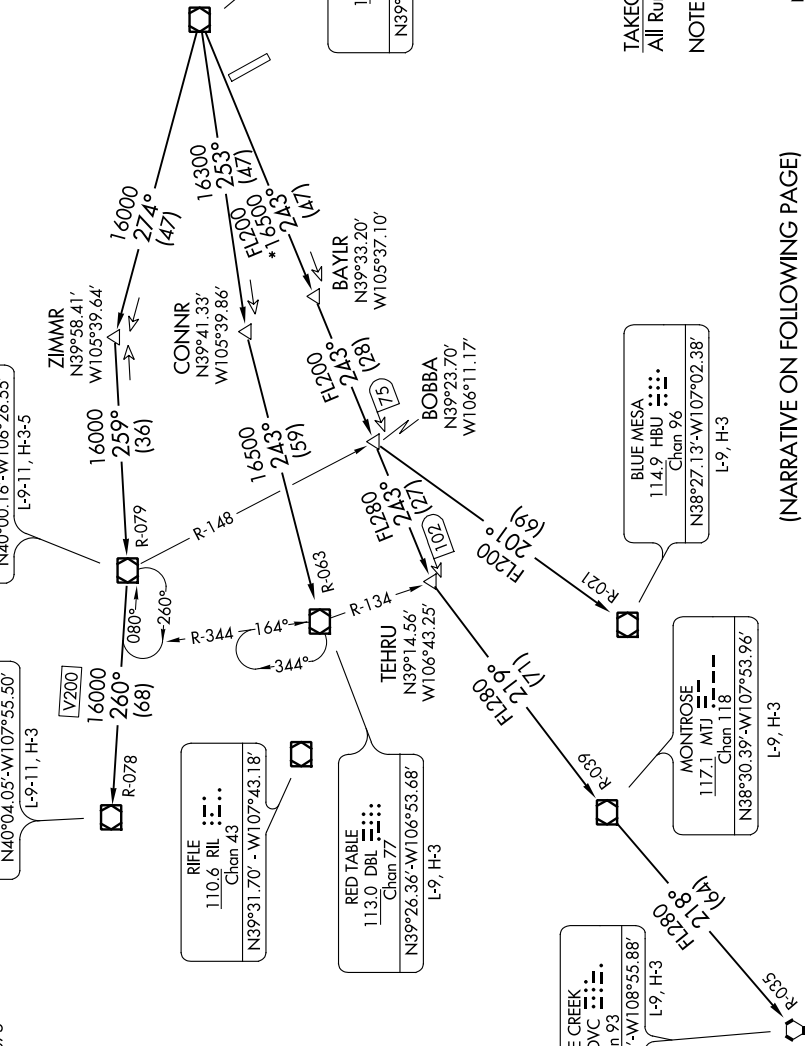
DOVE CREEK
114.6 DVC 
Chan 93
N37°48.52'-W108°55.88'

MONTROSE
117.1 MTJ ---
Chan 118
N38°30.39'-W107°53.96'

BLUE MESA
114.9 HBU $\frac{\cdot\cdot\cdot}{\cdot\cdot}$
Chan 96

107° 00' 00" N
106° 11.17' W

DENVER
117.9 DEN
Chan 126
N39°48.75'-W104°39.64'



TAKEOFF MINIMUMS
All Runways: Standard.

NOTE: Chart not to scale.

(NARRATIVE ON FOLLOWING PAGE)