

APCH CRS	Rwy Idg	11,006
323°	TDZE	5663
	Arpt Elev	5663

AL-538 (USAF)

BUCKLEY AFB (KBKF)

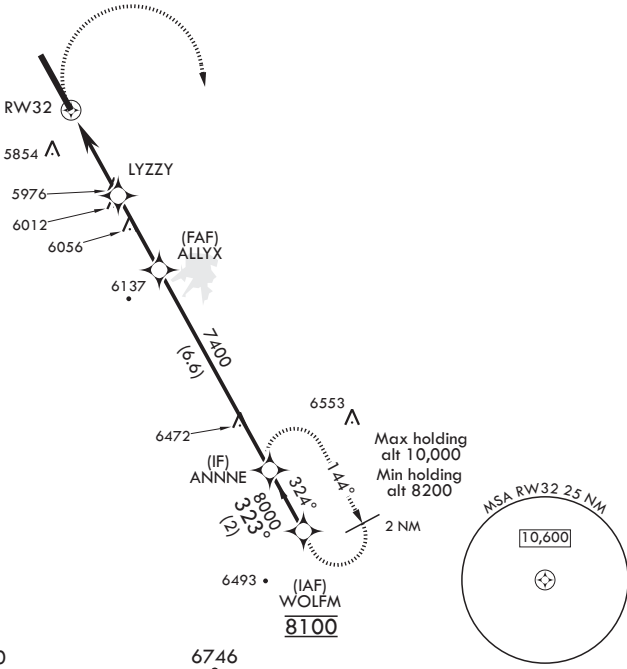
⚠ * When ALS inop increase CAT AB RVR to 55, vis to 1 mile; CAT CD vis to 1 3/4 miles.
** Circling NA East of Rwy 14-32.

ALSF-1

MISSED APPROACH: Climbing right turn to 8200 to ANNNE and hold or as directed by ATC.

ATIS★ 119.675 259.3	DENVER APP CON/DEP CON 128.45 251.075	TOWER★ 121.0 291.675	GND CON 121.6 275.8	CLNC DEL 121.6 275.8
------------------------	--	-------------------------	------------------------	-------------------------

DME/DME RNP -0.3 NA
GPS REQUIRED



EMERG SAFE ALT 100 NM 16,500

8200 **ANNNE**

WOLFM

8100

323°

8000

ALLYX

7400

6600

LYZZY

1.7 NM to RW32

2.8 NM

2.4 NM

≤3.04°

TCH 45

ELEV 5663

TDZE 5663

CATEGORY	A	B	C	D
RNAV MDA*	6260/24	597 (600-1/2)	6260-1 1/4	597 (600-1 1/4)
CIRCLING**	6260-1	597 (600-1)	6360-2 697 (700-2)	6400-2 1/4 737 (800-2 1/4)

REIL Rwy 14

HIRL Rwy 14-32

323° to RW32

SW-1, 03 DEC 2020 to 31 DEC 2020

SW-1, 03 DEC 2020 to 31 DEC 2020