

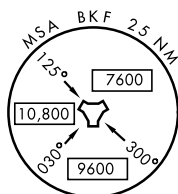
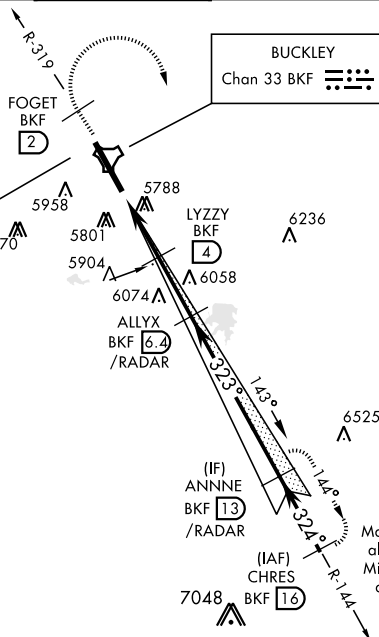
ILS or LOC/DME RWY 32

LOC I-BKF 109.7	APCH CRS 323°	Rwy ldg 11,006 TDZE 5663 Arpt Elev 5663	AL-538 [USAF]	BUCKLEY AFB (KBKF)
▼ * When ALS inop, increase CAT ABCDE RVR to 40 and vis to ¼ miles. ** When ALS inop, increase CAT AB RVR to 55 and vis to 1 mile, CAT CDE vis to 1 ¾ miles. *** Circling NA East of Rwy 14-32.			ALSF-1	MISSED APPROACH: Climb on BKF TACAN R-319 to FOGET, then climbing right turn to 8200 and intercept BKF R-144 to ANNNE and hold or as directed by ATC.
ATIS ★ 119.675 259.3	DENVER APP CON 128.45 251.075	BUCKLEY TOWER ★ 121.0 291.675	GND CON 121.6 275.8	CLNC DEL 121.6 275.8

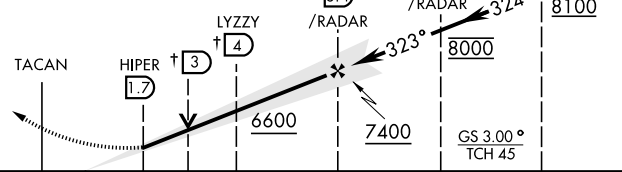
Missed approach requires use of RNAV or ATC RADAR monitoring.

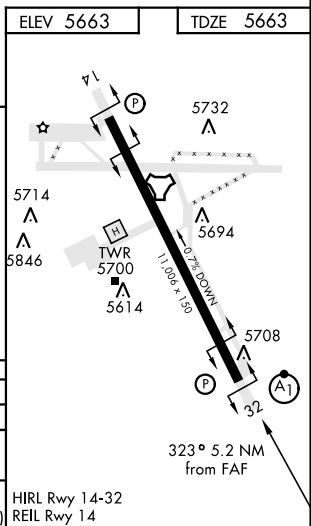
CAT E remain within 4.25 NM of Rwy when circling.

LOCALIZER 109.7
I-BKF



EMERG SAFE ALT 100 NM 16,500

8200 ↑ BKF R-319	FOGET	ANNNE	† LOC only		
TACAN	HIPER 1.7	LYZZY 3 4	ALLYX 6.4 /RADAR	ANNNE 13 /RADAR	CHRES 16 8100
					
.5 NM 2.3 NM 2.4 NM					
CATEGORY	A	B	C	D	E
S-ILS 32 *	5863/24		200	(200-½)	
S-LOC 32 **	6280/24 617 (700-½)		6280-138 617 (700-138)		
CIRCLING ***	6280-1 617 (700-1)		6360-2 697 (700-2)	6400-2¼ 737 (800-2¼)	6420-2¾ 757 (800-2¾)



ILS or LOC/DME RWY 32