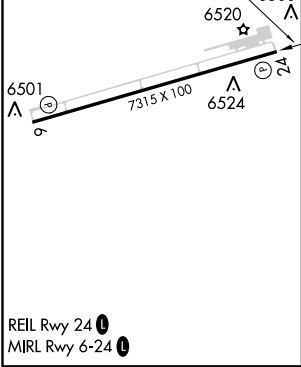
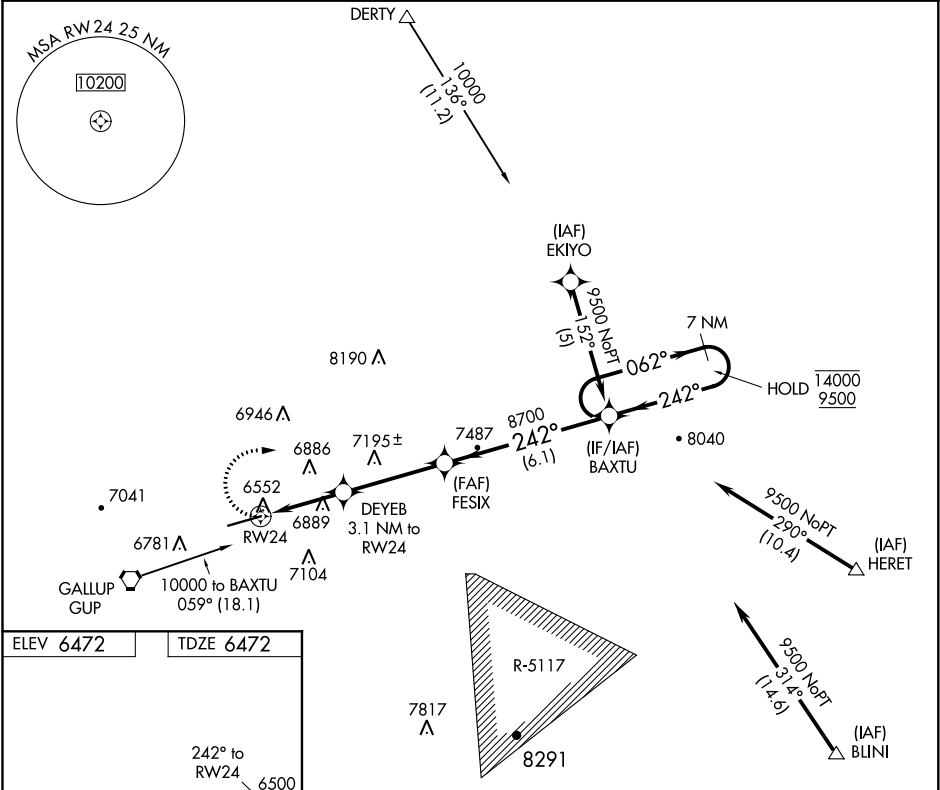


APP CRS	Rwy Idg	7315
242°	TDZE	6472
	Apt Elev	6472

RNAV (GPS) RWY 24
GALLUP MUNI (GUP)

RNP APCH.	MISSED APPROACH: Climbing right turn to 9500 direct BAXTU and hold.
Rwy 24 helicopter visibility reduction below 3/4 SM NA.	

ASOS 118.375	ALBUQUERQUE CENTER 124.325 288.25	UNICOM 122.95 (CTAF)
-----------------	--------------------------------------	-------------------------



9500	BAXTU	VGSI and descent angles not coincident (VGSI Angle 3.00/TCH 48).	7 NM	Holding Pattern
DEYEB	FESIX	BAXTU	062°	14000
3.1 NM to RW24	3.00°	242°	242°	9500
TCH 45	8700			
7500				
3.1 NM	3.8 NM	6.1 NM		
CATEGORY	A	B	C	D
LNAV MDA	7360-1 1/4	888 (900-1 1/4)	7360-2 1/2	888 (900-2 1/2)
CIRCLING	7360-1 1/4	888 (900-1 1/4)	7360-2 3/4	7360-3
			888 (900-2 3/4)	888 (900-3)

SW-1, 03 DEC 2020 to 31 DEC 2020

SW-1, 03 DEC 2020 to 31 DEC 2020