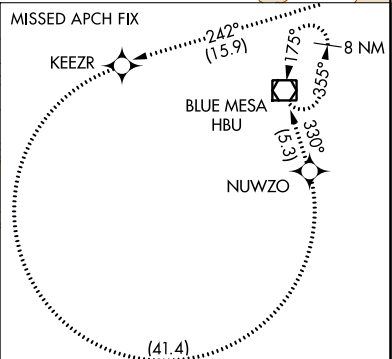
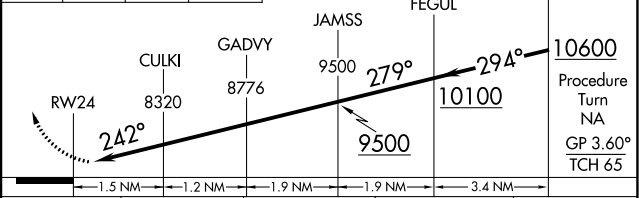


RNAV (RNP) RWY 24
GUNNISON-CRESTED BUTTE RGNL (GUC)

MISSED APPROACH: Climb to 14000 on track 242° to KEEZR, and left turn to NUWZO, and on track 330° to HBU VOR/DME and hold.

UNICOM
122.7 (CTAF) **L**

VGSI and RNAV glidepath not coincident (VGSI Angle 3.60/TCH 71).



| CATEGORY | A | B | C | D |
|-------------|--------------------|---|---|----|
| RNP 0.10 DA | 7989-1 309 (400-1) | | | NA |

AUTHORIZATION REQUIRED

SW-1, 03 DEC 2020 to 31 DEC 2020