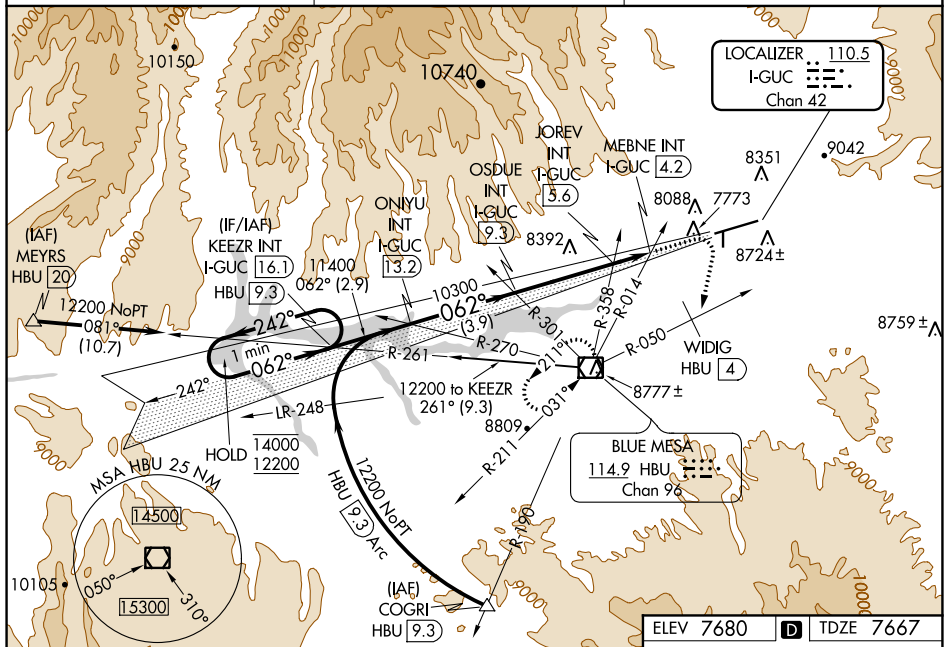


ILS or LOC RWY 6
GUNNISON-CRESTED BUTTE RGNL (GUC)

MISSED APPROACH: Climb to 10000 then climbing right turn to 12000 on heading 180° and HBU VOR/DME R-050 to WIDIG/HBU 4 DME continue on HBU VOR/DME R-050 to HBU VOR/DME and hold.

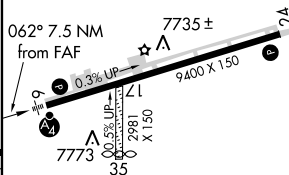
Rwy 6 helicopter visibility reduction below $\frac{3}{4}$ SM NA.
Inop table does not apply. Procedure NA when airport
closed except by prior arrangement.

UNICOM
122.7 (CTAF) **L**

ELEV 7680	D	TDZE 7667
-----------	----------	-----------

Figure 1-1: Sample Enroute Chart. This chart segment displays a flight path with various waypoints and navigation aids. Key features include:

- Waypoints and Altitudes:** KEEZR INT I-GUC 16.1, OSDUE INT I-GUC 9.3, JOREV INT I-GUC 5.6, MEBNE INT I-GUC 4.2, and ONIYU INT I-GUC 13.2.
- Navigation Aids:** HBU R-050, WIDIG HBU 4, and HBU R-050.
- Altitudes and Headings:** 10000, 12000, 10300, 11400, 1062°, 10300, and 10300.
- Chart Elements:** One Minute Holding Pattern, GS 3.20°, TCH 49, and * LOC only.
- Distances:** 2.9 NM, 3.9 NM, 3.7 NM, 1.4 NM, and 2.4 NM.



CATEGORY	A	B	C	D
S-ILS 6	8590-3	923 (1000-3)		NA
S-LOC 6	9020-3	1353 (1400-3)		
CIRCLING	9260-3	1580 (1600-3)		
	JOEY FIX MINIMUMS			
S-LOC 6	8640-3	973 (1000-3)		
CIRCLING	9260-3	1580 (1600-3)		

HIRL Rwy 6-24					
REIL Rwy 24					
FAF to MAP 5.1 NM					
Knots	60	90	120	150	180
Min:Sec	5:06	3:24	2:33	2:02	1:4

SW-1, 03 DEC 2020 to 31 DEC 2020

SW-1, 03 DEC 2020 to 31 DEC 2020