

# TACAN RWY 31

TACAN CVS Chan <b>53</b>	APCH CRS <b>316°</b>	Rwy Idg <b>8196</b> TDZE <b>4270</b> Arpt Elev <b>4295</b>
-----------------------------	-------------------------	--

AL-512 (USAF)

CANNON AFB (KCVS)

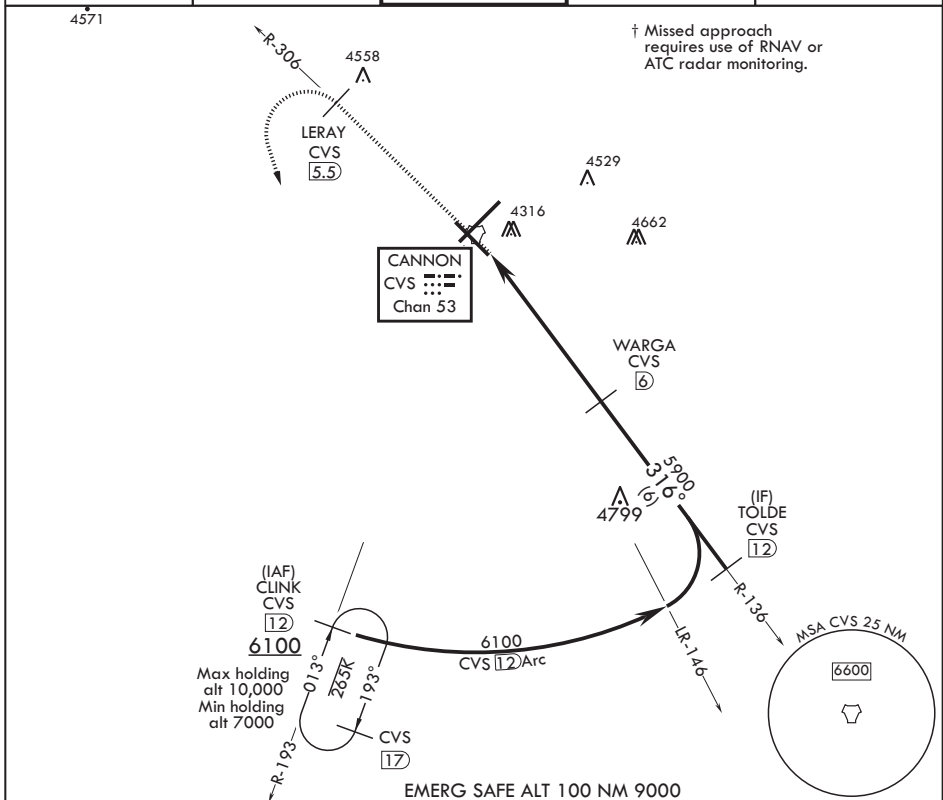
**T** \* When ALS inop, increase CAT AB vis to 1 mile, CAT CDE increase vis to 1 3/8 miles.

SSALR

(A<sub>3</sub>)

**MISSED APPROACH:** Climb to 6000 out CVS TACAN R-306 to 5.5 DME (LERAY) then turn left climbing to 7000 intercept CVS TACAN R-193 to 12 DME (CLINK) and hold.

ATIS 119.1 269.9	CANNON APP CON 118.425 352.1	TOWER 120.4 270.25	GND CON 121.9 275.8	CLNC DEL 120.2 293.225
---------------------	---------------------------------	-----------------------	------------------------	---------------------------



**6000** **LERAY** **7000** **CLINK**  
**CVS** **CVS** **CVS** **CVS**  
**R-306** **5.5** **R-193** **12**

**TACAN** **CEGUG** **WARGA** **TOLDE** **CLINK**  
**R-306** **R-193** **R-136** **R-193**

**6100** **6100**

**316°** **316°**

**5900** **6100**

**5.3 NM** **1.9** **12**

**≤ 2.84°** **TCH 41** **Arc**

CATEGORY	A	B	C	D	E
S-31 *	4700-1/2	430 (500-1/2)	4700-3/4	430	(500-3/4)
<b>C</b> CIRCLING	4840-1	545 (600-1)	4860-1 1/2 565 (600-1 1/2)	5000-2 1/4 705 (800-2 1/4)	5020-2 1/2 725 (800-2 1/2)

**ELEV 4295** **TDZE 4270**

**BCN** **TWR 4437** **10,003 x 150** **8190 x 150** **0.3% UP** **316° 5.4 NM from FAF**

CLOVIS, NEW MEXICO

34°23'N - 103°19'W

CANNON AFB (KCVS)

# TACAN RWY 31

Amdt 3 10OCT19

REIL all Rwy's 316°  
HIRL all Rwy's from

316° 5.4NM  
from FAF