

CLOVIS, NEW MEXICO

# RNAV (GPS) RWY 22

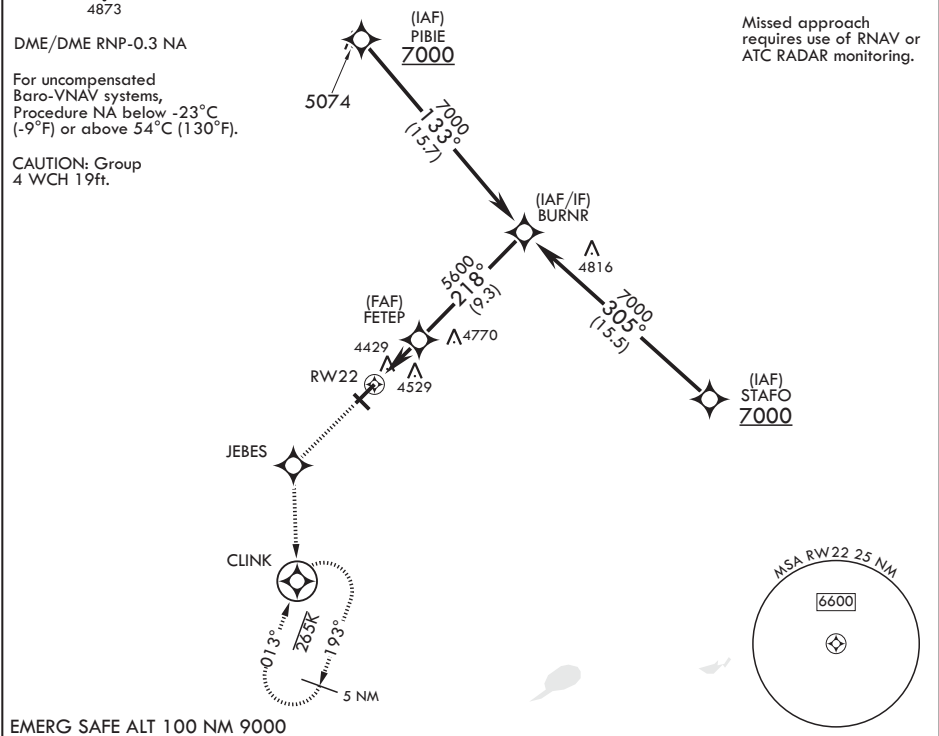
WAAS CH 41173 W22A	APCH CRS 218°	Rwy ldg TDZE Arpt Elev	10,003 4295 4295
--------------------------	------------------	------------------------------	------------------------

AL-512 (USAF)

CANNON AFB (KCVS)


<p>▼ * When ALS inop, increase RVR to 40, vis to 3/4 mile. ** When ALS inop, increase vis to 1 1/4 miles. *** When ALS inop, increase CAT AB RVR to 55, vis to 1 mile; CAT CDE vis to 1 1/4 miles.</p>	ALS F-1 	MISSED APPROACH: Climb to 7000 direct JEBES, track 171° to CLINK and hold.
--	-------------	--

ATIS 119.1 269.9	CANNON APP CON 118.425 352.1	TOWER 120.4 270.25	GND CON 121.9 275.8	CLNC DEL 120.2 293.225
---------------------	---------------------------------	-----------------------	------------------------	---------------------------




EMERG SAFE ALT 100 NM 9000

7000




JEBES



tr 171°

CLINK



VGSI and RNAV glidepath  
not coincident (VGSI angle  
3.00/TCH 38).

BURNR

7000

218°

FETEP

5600

GP 3.00°  
TCH 44

† RNAV only

RW22

† 1.2 NM to  
RW22

3.9 NM

ELEV 4295

TDZE 4295

218° to RW22

BCN 4433

TWR 4437

10,003 x 150

0-36 Up

8,192 x 150

REIL all Rwy  
HIRL all Rwy

CATEGORY	A	B	C	D	E
LPV DA*	4495/24		200	(200-1/2)	
RNAV/VNAV DA**	4720/40		425	(500-3/4)	
RNAV MDA***	4720/24 425 (500-1/2)		4720/40	425	(500-3/4)
CIRCLING	4840-1 545 (600-1)		4860-1 1/2 565 (600-1 1/2)	5000-2 1/4 705 (800-2 1/4)	5020-2 1/2 725 (800-2 1/2)

CLOVIS, NEW MEXICO

34°23'N - 103°19'W

CANNON AFB (KCVS)

Amtdt 6 16JUL20

# RNAV (GPS) RWY 22

SW-1, 03 DEC 2020 to 31 DEC 2020

SW-1, 03 DEC 2020 to 31 DEC 2020