

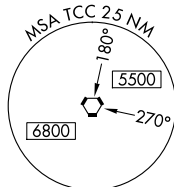
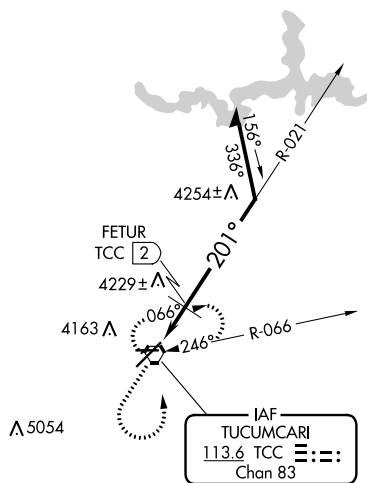
VORTAC TCC <b>113.6</b> Chan <b>83</b>	APP CRS <b>201°</b>	Rwy Idg <b>7104</b> TDZE <b>4047</b> Apt Elev <b>4065</b>
--	------------------------	---

VOR RWY 21  
TUCUMCARI MUNI (TCC)

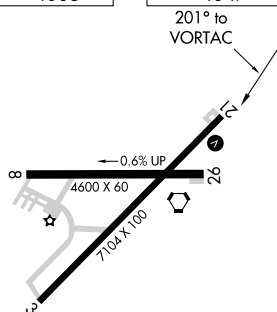
**T** If local altimeter setting not received, procedure NA. Circling NA for Cat D north of Rwy 8 and northwest of Rwy 21.

**MISSED APPROACH:** Climb to 5100 then climbing left turn to 6100 direct TCC VORTAC and hold.

ASOS <b>119.275</b>	ALBUQUERQUE CENTER <b>126.85 285.6</b>	UNICOM <b>122.95 (CTAF) 0</b>
------------------------	---	----------------------------------



ELEV 4065	TDZE 4047
-----------	-----------



A 5229

Diagram illustrating the FETUR VORTAC station and its associated altitudes and bearings:

- Station: FETUR TCC (2)
- Altitudes: 5100, 6100, TCC, 4600, 5800
- Bearings: 021°, 201°
- Distance: 1.6 NM
- Note: Remain within 10 NM

CATEGORY	A	B	C	D
S-21	4600-1	553 (600-1)	4600-1½ 553 (600-1½)	4600-1¾ 553 (600-1¾)
CIRCLING	4600-1	535 (600-1)	4600-1½ 535 (600-1½)	4640-2 575 (600-2)

FETUR FIX MINIMUMS

S-21	4480-1	433 (500-1)	4480-1½ 433 (500-1½)	4480-1¾ 433 (500-1¾)
CIRCLING	4580-1	515 (600-1)	4580-1½ 515 (600-1½)	4640-2 575 (600-2)

TUCUMCARI, NEW MEXICO  
Amdt 6A 08OCT20

35°11'N-103°36'W

TUCUMCARI MUNI (TCC)  
VOR RWY 21

SW-1, 03 DEC 2020 to 31 DEC 2020

SW-1, 03 DEC 2020 to 31 DEC 2020