

WAAS CH 65702 W17A	APP CRS 170°	Rwy Idg TDZE Apt Elev	9999 3666 3671
--	------------------------	-----------------------------	---

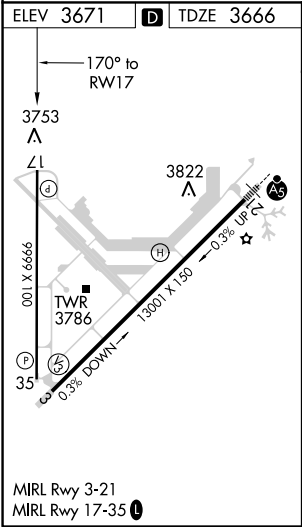
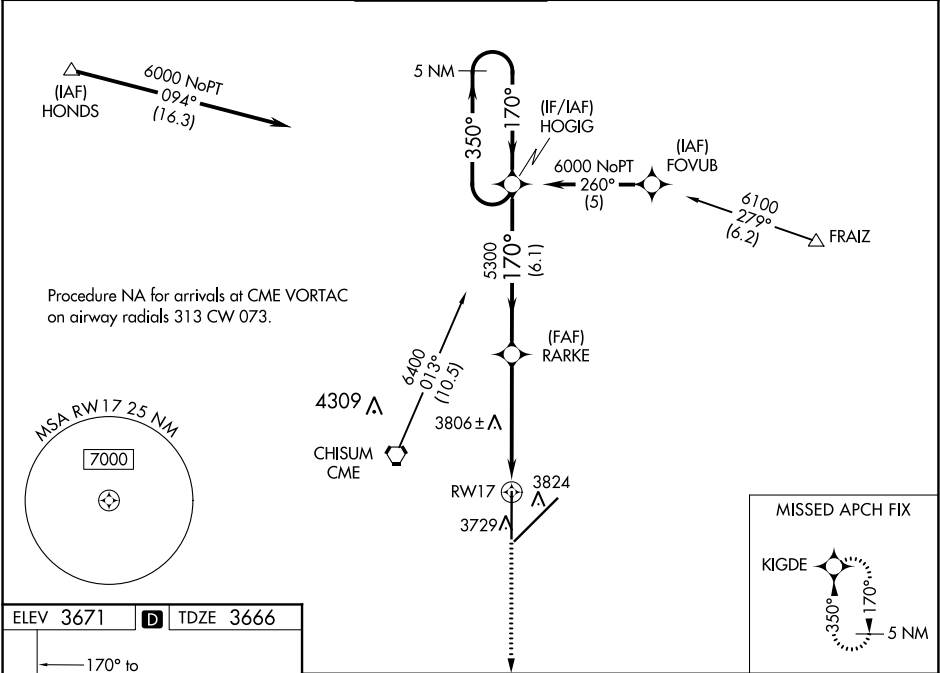
RNAV (GPS) RWY 17
ROSWELL AIR CENTER (ROW)

ASR

DME/DME RNP-0.3 NA. For uncompensated Baro-VNAV systems, LNAV/VNAV NA below -22°C (-7°F) or above 41°C (106°F).
If local altimeter setting not received, use Artesia altimeter setting and increase all DAs/MDAs 100 feet. VDP and Baro-VNAV NA when using Artesia altimeter setting.

MISSED APPROACH: Climb to 6000 direct KIGDE and hold.

ATIS 128.45 306.2	ROSWELL APP CON* 119.6 239.0	ROSWELL TOWER* 118.5 (CTAF) 0 233.7	GND CON 121.9 348.6	CLNC DEL 132.875 282.25	UNICOM 122.95
-----------------------------	--	---	-------------------------------	-----------------------------------	-------------------------



6000	KIGDE	HOGIG	5 NM Holding Pattern	350° 170°	6000	GP 3.00° TCH 50
*LNAV only	*1.3 NM to RWY 17	RARKE	5300	1.3 NM	3.6 NM	6.1 NM
CATEGORY	A	B	C	D		
LPV DA	3916-3/4	250 (300-3/4)				
LNAV/VNAV DA	4003-1 1/4	337 (400-1 1/4)				
LNAV MDA	4120-1	454 (500-1)	4120-1 1/4 454 (500-1 1/4)	4120-1 1/2 454 (500-1 1/2)		
CIRCLING	4140-1 1/4	469 (500-1 1/4)	4140-1 1/2 469 (500-1 1/2)	4240-2 569 (600-2)		

SW-1, 03 DEC 2020 to 31 DEC 2020

SW-1, 03 DEC 2020 to 31 DEC 2020