

WAAS
CH **93813**
W26A

APP CRS
261°

Rwy ldg **6849**
TDZE **4188**
Apt Elev **4229**

RNAV (GPS) RWY 26
LA JUNTA MUNI (LHX)

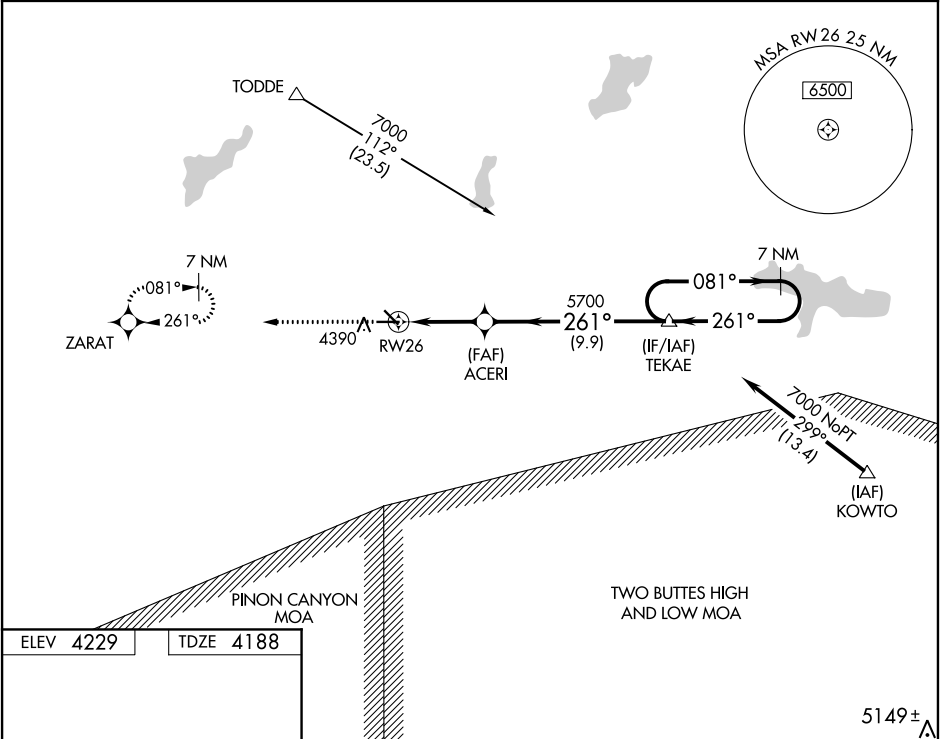
▼

▲

For uncompensated Baro-VNAV systems, LNAV/VNAV NA below -23°C (-9°F) or above 40°C (104°F). DME/DME RNP-0.3 NA. Baro-VNAV and VDP NA when using Lamar altimeter setting. When local altimeter setting not received, use Lamar altimeter setting and increase all DA/MDA 180 feet and increase all visibility ¾ mile.

MISSED APPROACH: Climb to 7000 direct ZARAT and hold.

ASOS 135.525	DENVER CENTER 128.375 379.95	UNICOM 123.0 (CTAF) 0
------------------------	--	---------------------------------



7000

ZARAT

*LNAV only.

*0.9 NM to RW26

ACERI

5700

TEKAE

7 NM Holding Pattern

7000

081°

261°

GP 3.00°

TCH 43

CATEGORY	A	B	C	D
LPV DA	4438-1	250 (300-1)		
LNAV/VNAV DA	4438-1	250 (300-1)		
LNAV MDA	4480-1	292 (300-1)		
CIRCLING	4740-1	511 (600-1)	4740-1½ 511 (600-1½)	4780-2 551 (600-2)