

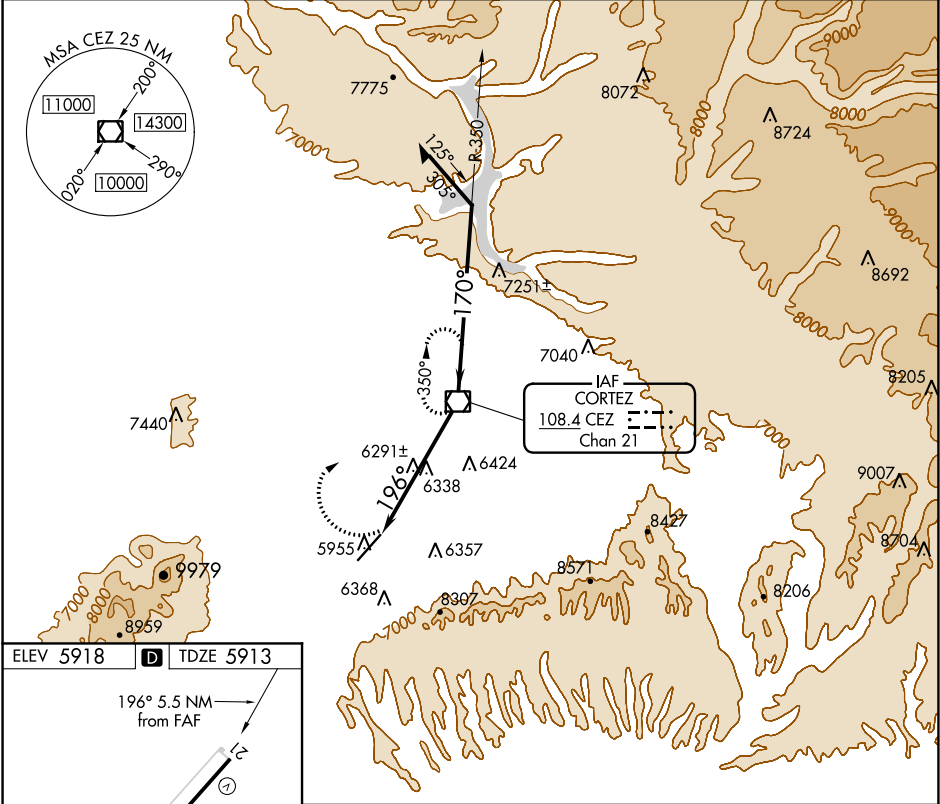
VOR/DME CEZ	APP CRS	Rwy Idg	7205
108.4	196°	TDZE	5913
Chan 21		Apt Elev	5918

VOR RWY 21
CORTEZ MUNI (CEZ)

CAUTION: Highway lights located between facility and runway are aligned with approach area.
Rwy 21 helicopter visibility reduction below 3/4 SM NA.

MISSED APPROACH: Climbing right turn to 9800 direct to CEZ VOR/DME and hold.

ASOS 135.625	DENVER CENTER 118.575 348.7	UNICOM 122.8 (CTAF) 0
-----------------	--------------------------------	--------------------------



ELEV 5918 **D** TDZE 5913

196° 5.5 NM from FAF

7205 X 100

REIL Rws 3 and 21 0
MIRL Rwy 3-21 0

FAF to MAP 5.5 NM

Knots	60	90	120	150	180
Min:Sec	5:30	3:40	2:45	2:12	1:50

9800 CEZ

CEZ VOR/DME

Remain within 10 NM

350°

170°

9800

8000

≤ 3.49° TCH 50

5.5 NM

CATEGORY	A	B	C	D
S-21	6660-1 747 (800-1)	6660-1¼ 747 (800-1¼)	6660-2 747 (800-2)	6660-2¼ 747 (800-2¼)
CIRCLING	6660-1 742 (800-1)	6660-1¼ 742 (800-1¼)	6660-2¼ 742 (800-2¼)	6800-3 882 (900-3)

SW-1, 03 DEC 2020 to 31 DEC 2020

SW-1, 03 DEC 2020 to 31 DEC 2020