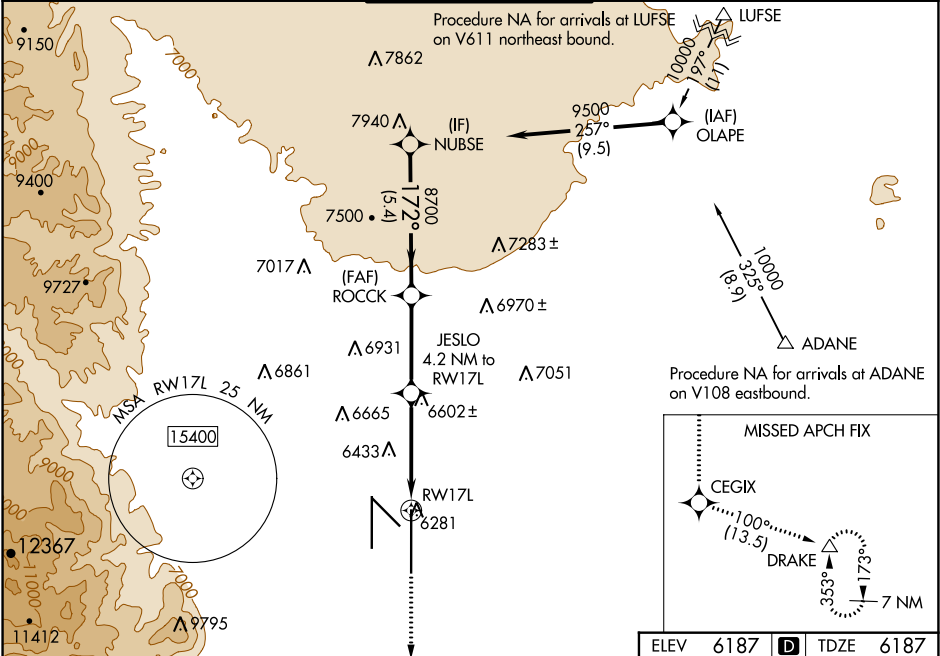


WAAS CH 69618 W17A	APP CRS 172°	Rwy Idg TDZE 6187 Apt Elev 6187	13501
--	------------------------	---	--------------

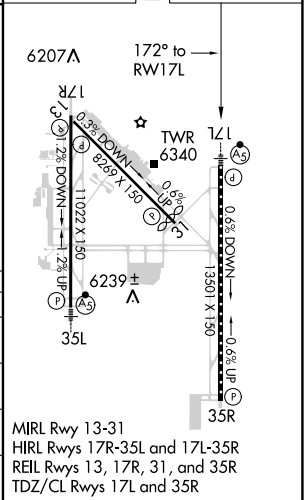
RNAV (GPS) Y RWY 17L
CITY OF COLORADO SPRINGS MUNI (COS)

V For uncompensated Baro-VNAV systems, LNAV/VNAV NA below -21°C (-5°F) or above 44°C (112°F). DME/DME RNP-0.3 NA. For inop MALS, increase LNAV Cat C/D visibility to 2½ SM.	MALS 	MISSED APPROACH: Climb to 9000 direct CEGIX on track 100° to DRAKE and hold.
---	----------	---

ATIS 125.0 254.3	SPRINGS APP CON 124.0 257.875	SPRINGS TOWER 119.9 360.6	GND CON 121.7 348.6	CLNC DEL 134.45 363.125
----------------------------	---	-------------------------------------	-------------------------------	-----------------------------------



9000 ↑ CEGIX tr 100° DRAKE △	VGSi and RNAV glidepath not coincident (VGSi Angle 3.00/TCH 53).			
LNAV only		<p>JESLO 4.2 NM to RW17L 7580 8700 172° 9500 GP 3.00° TCH 57</p>		
CATEGORY	A	B	C	D
LPV DA	6387/18		200 (200-½)	
LNAV/ VNAV DA	6602/45		415 (500-¾)	
LNAV MDA	7000/24 813 (900-½)	7000/40 813 (900-¾)	7000-1⅞	813 (900-1⅞)
C CIRCLING	7000-1¼	813 (900-1¼)	7040-2 ½ 853 (900-2 ½)	7260-3 1073 (1100-3)



SW-1, 03 DEC 2020 to 31 DEC 2020

SW-1, 03 DEC 2020 to 31 DEC 2020