


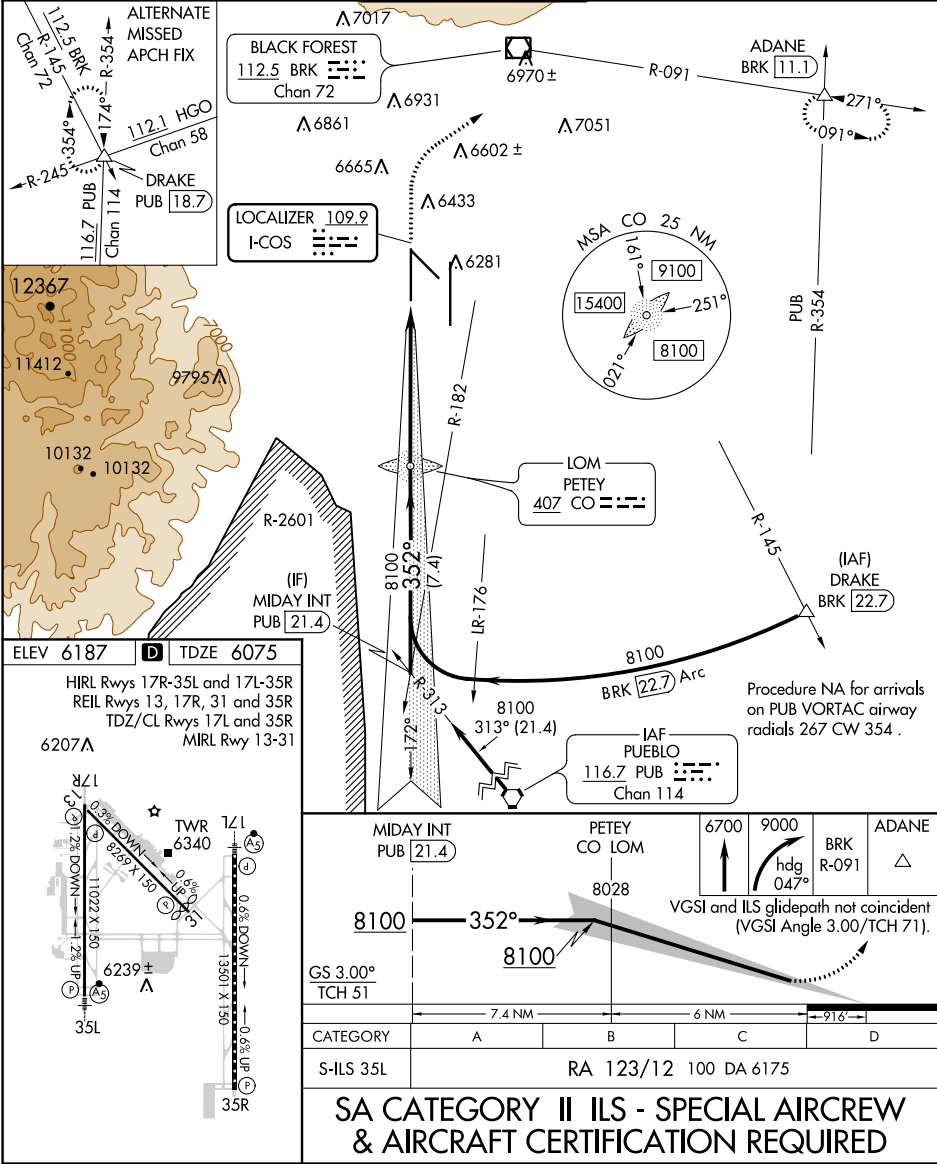
LOC I-COS 109.9	APP CRS 352°	Rwy Idg TDZE Apt Elev	11022 6075 6187
---------------------------	------------------------	-----------------------------	--

ILS RWY 35L (SA CAT II)

CITY OF COLORADO SPRINGS MUNI (COS)

⚠ RADAR monitoring required when R-2601 in use. Reduced lighting: requires specific OPSPEC, MSPEC, or LOA approval and use of autoland or HUD to touchdown.	MALSR 	MISSED APPROACH: Climb to 6700 then climbing right turn to 9000 on heading 047° and on BRK VOR/DME R-091 to ADANE INT/BRK 11.1 DME and hold.
--	---	--

ATIS 125.0 254.3	SPRINGS APP CON 124.0 257.875	SPRINGS TOWER 119.9 360.6	GND CON 121.7 348.6	CLNC DEL 134.45 363.125
-----------------------------------	--	--	--------------------------------------	--



SW-1, 03 DEC 2020 to 31 DEC 2020

SW-1, 03 DEC 2020 to 31 DEC 2020