

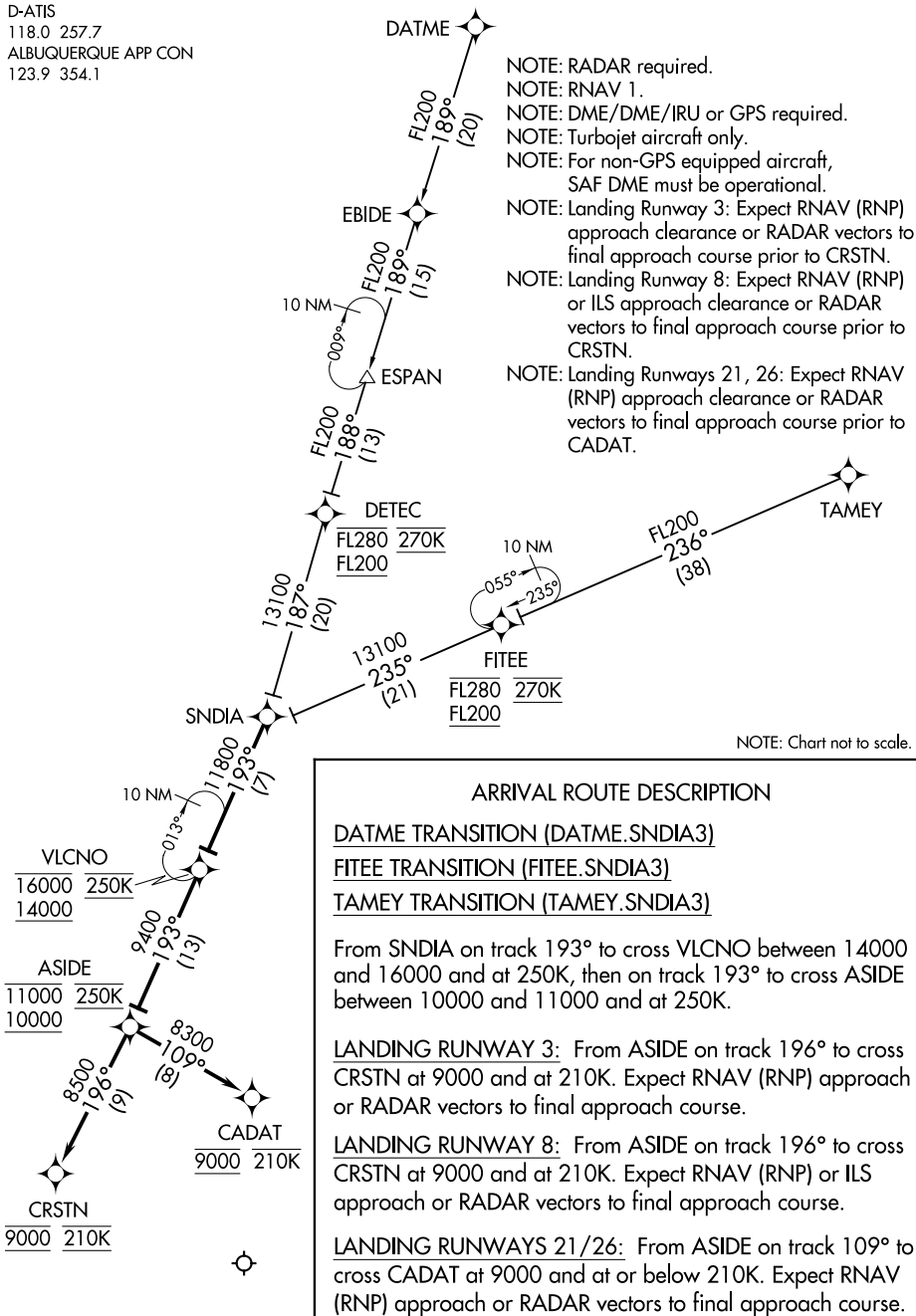
SNDIA THREE ARRIVAL (RNAV)

ALBUQUERQUE INTL SUNPORT (ABQ)

ALBUQUERQUE, NEW MEXICO

AL-12 (FAA)

D-ATIS
118.0 257.7
ALBUQUERQUE APP CON
123.9 354.1



NOTE: Chart not to scale.

ARRIVAL ROUTE DESCRIPTION

DATME TRANSITION (DATME.SNDIA3)

FITEE TRANSITION (FITEE.SNDIA3)

TAMEY TRANSITION (TAMEY.SNDIA3)

From SNDIA on track 193° to cross VLCNO between 14000 and 16000 and at 250K, then on track 193° to cross ASIDE between 10000 and 11000 and at 250K.

LANDING RUNWAY 3: From ASIDE on track 196° to cross CRSTN at 9000 and at 210K. Expect RNAV (RNP) approach or RADAR vectors to final approach course.

LANDING RUNWAY 8: From ASIDE on track 196° to cross CRSTN at 9000 and at 210K. Expect RNAV (RNP) or ILS approach or RADAR vectors to final approach course.

LANDING RUNWAYS 21/26: From ASIDE on track 109° to cross CADAT at 9000 and at or below 210K. Expect RNAV (RNP) approach or RADAR vectors to final approach course.

SNDIA THREE ARRIVAL (RNAV)

(SNDIA.SNDIA3) 08JAN15

ALBUQUERQUE, NEW MEXICO

ALBUQUERQUE INTL SUNPORT (ABQ)

SW-1, 03 DEC 2020 to 31 DEC 2020

SW-1, 03 DEC 2020 to 31 DEC 2020