

LZZRD THREE ARRIVAL (RNAV)

ALBUQUERQUE INTL SUNPORT (ABQ)

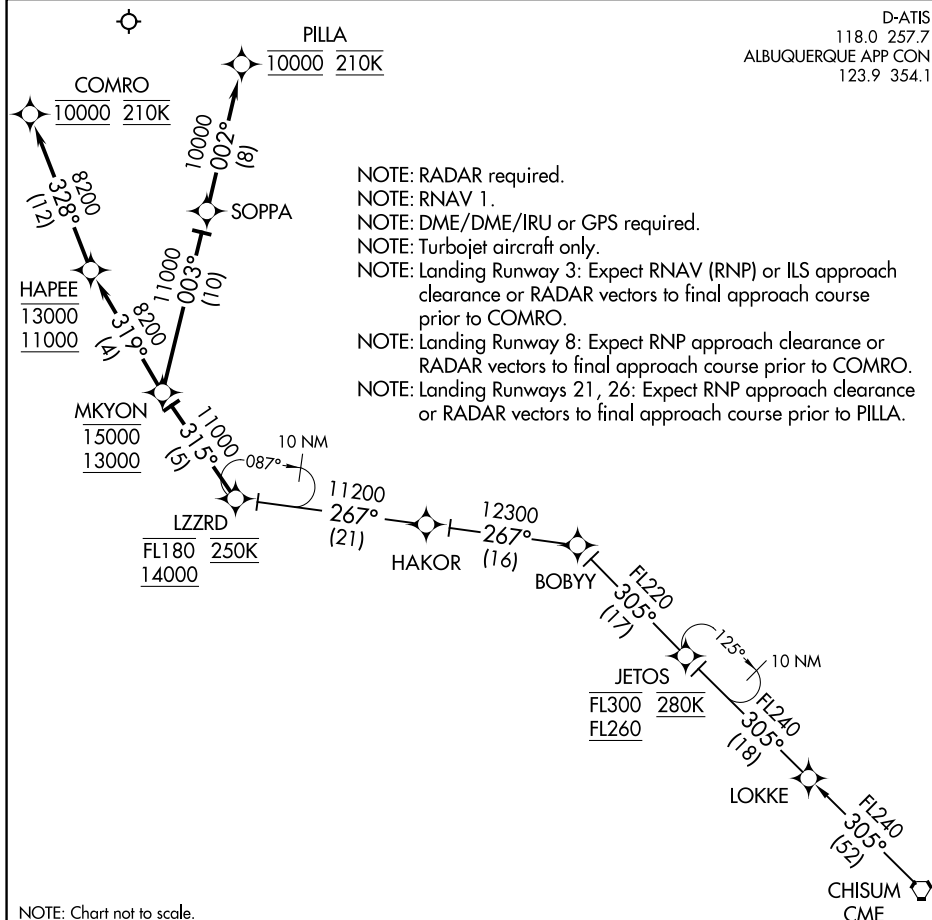
ALBUQUERQUE, NEW MEXICO

D-ATIS

118.0 257.7

ALBUQUERQUE APP CON

123.9 354.1



NOTE: Chart not to scale.

ARRIVAL ROUTE DESCRIPTION

CHISUM TRANSITION (CME.LZZRD3)

From LZZRD on track 315° to cross MKYON between 13000 and 15000.

LANDING RUNWAY 3: From MKYON on track 319° to cross HAPEE between 11000 and 13000, then on track 328° to cross COMRO at 10000 and at 210K. Expect RNAV (RNP) or ILS approach or RADAR vectors to final approach course.

LANDING RUNWAY 8: From MKYON on track 319° to cross HAPEE between 11000 and 13000, then on track 328° to cross COMRO at 10000 and at 210K. Expect RNAV (RNP) approach or RADAR vectors to final approach course.

LANDING RUNWAYS 21/26: From MKYON on track 003° to SOPPA, then on track 002° to cross PILLA at 10000 and at 210K. Expect RNAV (RNP) approach or RADAR vectors to final approach course.

LZZRD THREE ARRIVAL (RNAV)

(LZZRD.LZZRD3) 08JAN15

ALBUQUERQUE, NEW MEXICO

ALBUQUERQUE INTL SUNPORT (ABQ)

SW-1, 03 DEC 2020 to 31 DEC 2020