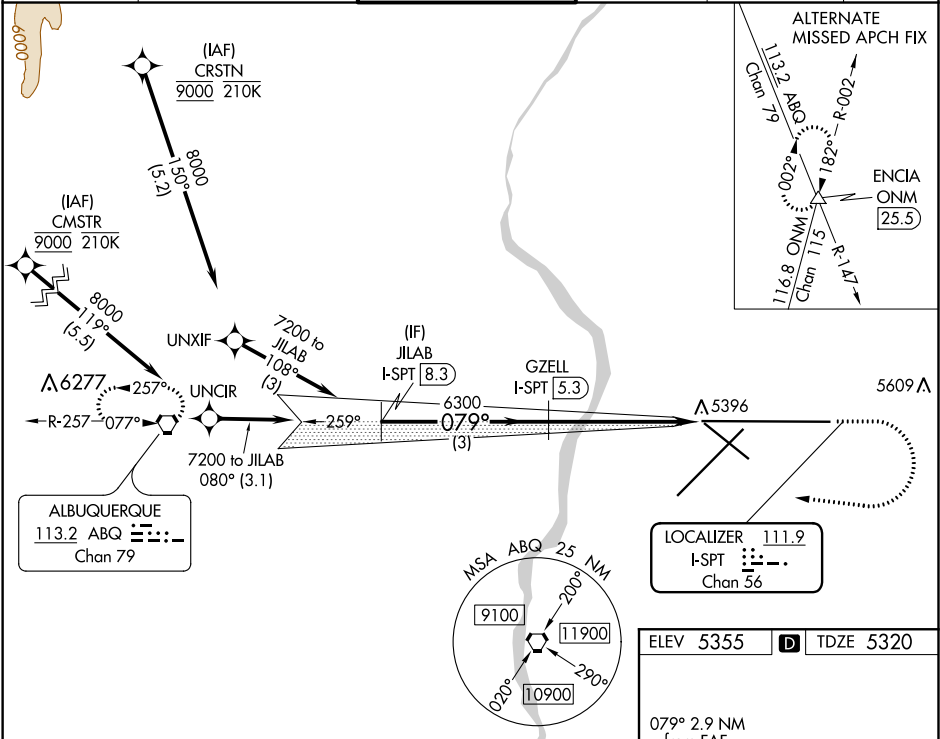


LOC/DME	I-SPT	APP CRS	Rwy Idg	12793
111.9		079°	TDZE	5320
Chan 56			Apt Elev	5355

ILS or LOC RWY 8
ALBUQUERQUE INTL SUNPORT (ABQ)

DME required. RNAV 1 - GPS or RADAR required for procedure entry.	MALSR	MISSED APPROACH: Climb to 5800 then climbing right turn to 8000 direct ABQ VORTAC and hold.
For inop ALS, increase S-LOC 8 Cat C and D visibility to RVR 6000.	AS	

D-ATIS	ALBUQUERQUE APP CON	ALBUQUERQUE TOWER	GND CON	CLNC DEL	CPDLC
118.0 257.7	123.9 354.1	120.3 351.9	121.9 348.6	119.2 259.3	



<div><div><div><div><div>JILAB</div><div>I-SPT 8.3</div></div><div><div>7200</div><div>079°</div></div><div><div>GS 3.00°</div><div>TCH 54</div></div></div><div><div><div>GZELL</div><div>I-SPT 5.3</div></div><div><div>6300</div><div>6300</div></div></div><div><div><div>5800</div><div>8000</div><div>ABQ</div></div><div><div>↑</div><div>↷</div><div>⬡</div></div></div><div><div><div>*I-SPT 3.5</div><div>I-SPT 2.4</div></div><div><div>3 NM</div><div>1.8 NM</div><div>1.1 NM</div></div></div></div><div><div><div>from FAR</div><div>5448</div><div>5532</div><div>TWR 5533</div><div>13793 X 150</div><div>0.5% DOWN</div><div>5367</div><div>6000 X 150</div><div>5367</div></div><div><div>MIRL Rwy 12-30</div><div>TDZ/CL Rwy 3 and 8</div><div>HIRL Rwy 3-21 and 8-26</div><div>REIL Rwy 21, 26, and 30</div></div><div><div>FAF to MAP 2.9 NM</div><table><tr><td>Knots</td><td>60</td><td>90</td><td>120</td><td>150</td><td>180</td></tr><tr><td>Min:Sec</td><td>2:54</td><td>1:56</td><td>1:27</td><td>1:10</td><td>0:58</td></tr></table></div></div></div>					Knots	60	90	120	150	180	Min:Sec	2:54	1:56	1:27	1:10	0:58					
Knots	60	90	120	150	180																
Min:Sec	2:54	1:56	1:27	1:10	0:58																
CATEGORY	A		B		C	D															
S-ILS 8	5527/18 207 (200-½)																				
S-LOC 8	5720/24 400 (400-½)		5720/40 400 (400-¾)																		
CIRCLING	5840-1 485 (500-1)	5920-1 565 (600-1)	5940-1½ 585 (600-1½)		NA																

SW-1, 03 DEC 2020 to 31 DEC 2020

SW-1, 03 DEC 2020 to 31 DEC 2020