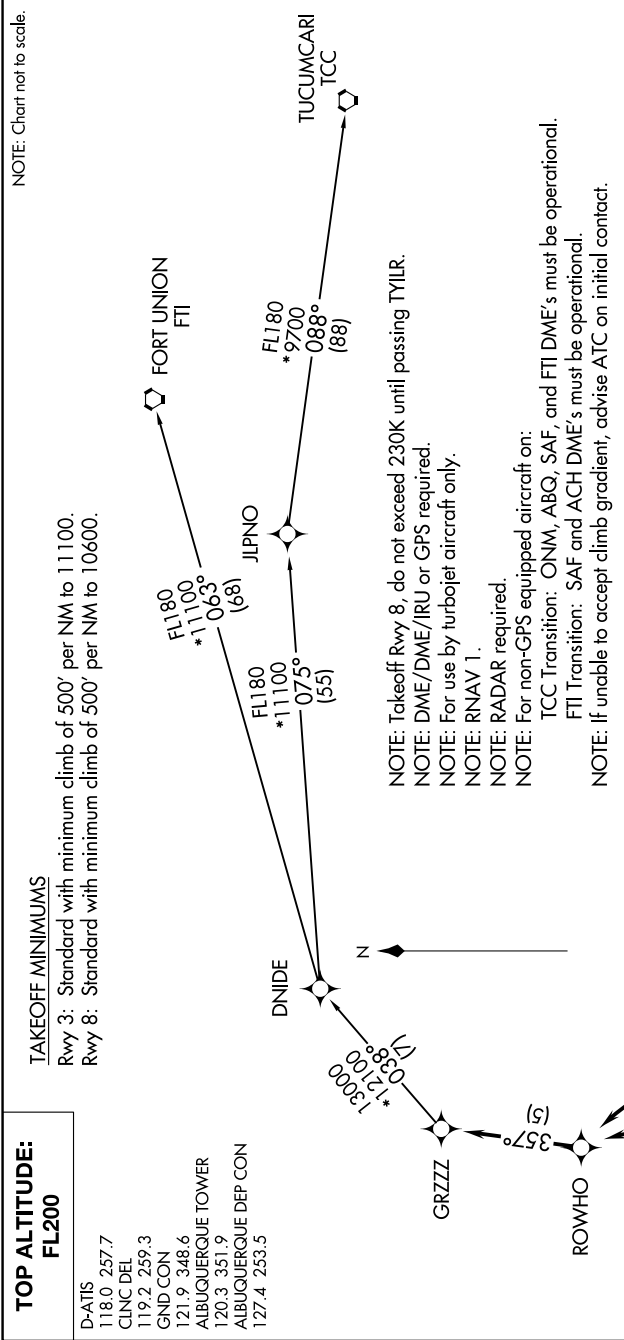


SW-1, 03 DEC 2020 to 31 DEC 2020



DEPARTURE ROUTE DESCRIPTION

TAKEOFF RUNWAY 3: Climb heading 034° to 5860, then left turn direct ROWHO, then on track 357° to GRZZZ. Thence

TAKEOFF RUNWAY 8: Climb heading 079° to 5860 and direct TYLR, then left turn direct ROWHO, then on track 357° to GRZZZ. Thence

. . . . (transition). Maintain FL200, expect filed altitude ten minutes after departure.

FORT UNION TRANSITION (GRZZZ3.FTI)

TUCUMCARI TRANSITION (GRZZZ3.TCC)

SW-1, 03 DEC 2020 to 31 DEC 2020