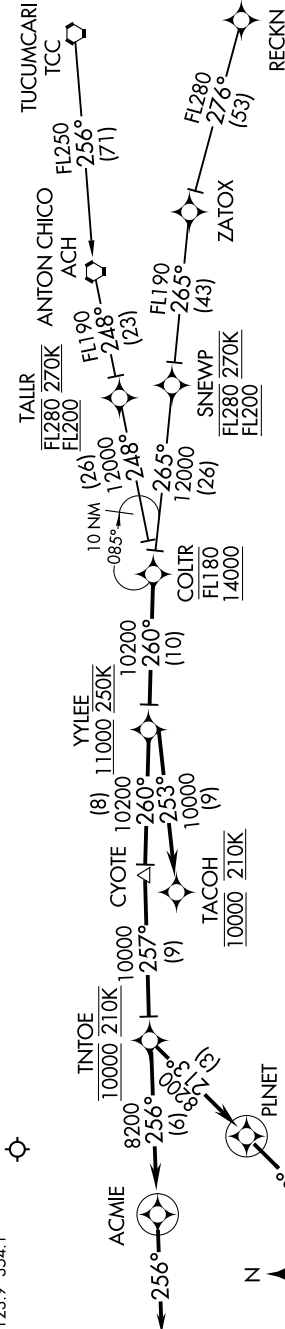


D-ATIS
118.0 257.7
ALBUQUERQUE APP CON
123.9 354.1

COLTR THREE ARRIVAL (RNAV)
(COLTR.COLTR3) 29MAY14



- NOTE: RADAR required.
- NOTE: RNAV 1.
- NOTE: DME/DME/IRU or GPS required.
- NOTE: Applicable for turbojet aircraft only.
- NOTE: LANDING RWY 3: Expect RNAV (RNP) approach clearance prior to TINTOE.
- Expect RADAR vectors to final approach course after PLINET.
- NOTE: LANDING RWY 8: Expect RNAV (RNP) approach clearance prior to TINTOE.
- Expect RADAR vectors to final approach course after ACMIE.
- NOTE: LANDING RWYS 21, 26: RNP-AR aircraft expect RNAV (RNP) approach prior to YYLEE. Non-RNP aircraft expect RADAR vectors to final approach course after TACOH.

NOTE: Chart not to scale.

ARRIVAL ROUTE DESCRIPTION

RECKN TRANSITION (RECKN.COLTR3)

TUCUMCARI TRANSITION (TCC.COLTR3)

From COLTR on track 260° to cross YYLEE at or above 11000 and at 250K.

LANDING RUNWAY 3: From YYLEE on track 260° to CYOTE, then on track 257° to cross TINTOE at 10000 and at 210K, then on track 213° to PLINET, then on track 213°. Expect RADAR vectors to final approach course.

LANDING RUNWAY 8: From YYLEE on track 260° to CYOTE, then on track 257° to cross TINTOE at 10000 and at 210K, then on track 256° to ACMIE, then on track 256°. Expect RADAR vectors to final approach course.

LANDING RUNWAYS 21, 26: From YYLEE on track 253° to cross TACOH at 10000 and at 210K. Expect RNAV (RNP) approach or RADAR vectors to final approach course.