

ALAMOGORDO, NEW MEXICO

HI-RNAV (GPS) RWY 22

APCH CRS
218°

Rwy Idg
10,578

TDZE
4083

Arpt Elev
4093

JAL-7 (USAF)

HOLLOMAN AFB (KHMN)

▼ * When ALS inop increase vis all CAT to 1 3/4 miles.
** When ALS inop increase CAT CDE vis to 1 3/4 miles.

ALSF-1



MISSED APPROACH: Climb to 5000 then climbing right turn to 7000 direct JOBAM, do not exceed 265 KIAS until turn completion and hold.

ATIS★	ALBUQUERQUE CENTER	APP CON	TOWER★	GND CON	CLNC DEL
273.5	132.65 257.6	120.6 269.225	119.3 255.9	127.05 275.8	126.7 289.4

RNP APCH

GPS REQUIRED

DME/DME RNP-0.3 NA

For uncompensated
Baro-VNAV systems,
procedure NA below -23°C
(-9°F) or above 45°C (114°F).

USAF Only: When VGSI
inop, straight-in Rwy 22
authorized at night with
MAJCOM A3 approval.

CAUTION: High terrain
to the East within 15 NM.

Visibility reduction
by helicopters NA.

Average Cold Temperature
based on standard
-30.00°C ISA deviation.

Descent gradient after
LEVAK is 407 ft/NM.

CAUTION: Circling to
Rwy 4 NA at night.

CAUTION: CAT E and
portions of CAT D circling
not fully contained in
controlled airspace.

CAUTION: Intermediate
segment descent
exceeds 318 ft/NM.

Unlit terrain 4083' MSL
200' from threshold,
72' right of course.

Unlit terrain 4083' MSL
200' from threshold,
400' right of course.

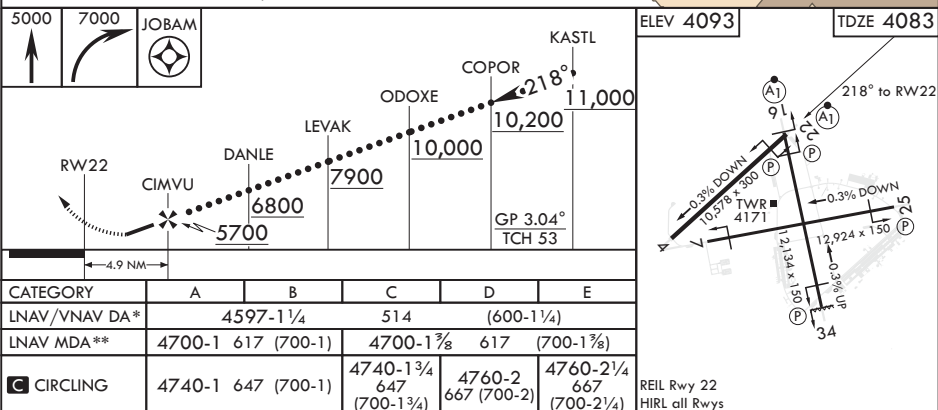
CAUTION: When Rwy
16 VGSI inop, circling to
Rwy 16 NA at night.
When VGSI inop,
procedure NA at night.

Descent gradient after
ODOXE is 567 ft/NM.

INBOUND WEST: Airspace
West Restricted. Expect
routing via CORONA.

NOT FOR CIVIL USE

EMERG SAFE ALT 100 NM 14,200



ALAMOGORDO, NEW MEXICO

32°51'N - 106°07'W

HOLLOMAN AFB (KHMN)

Amdt 1 08NOV18
TERPS

HI-RNAV (GPS) RWY 22