

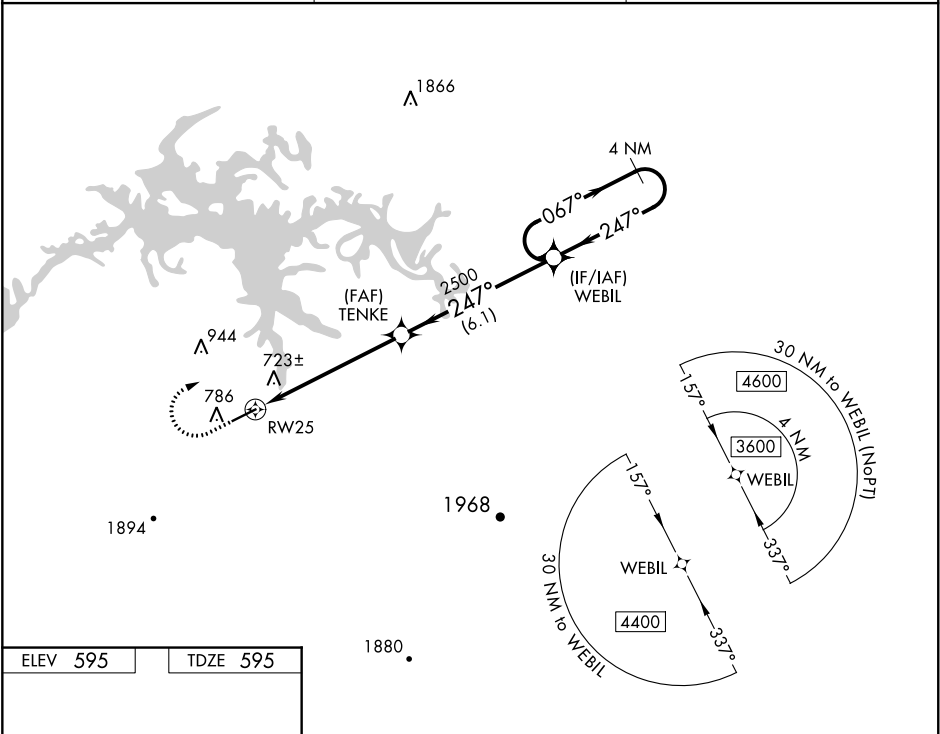
WAAS CH 72727 W25A	APP CRS 247°	Rwy ldg TDZE 595 Apt Elev 595
--	------------------------	---

RNAV (GPS) RWY 25

CENTRE-PIEDMONT CHEROKEE COUNTY RGNL (PYP)

<div><div>▼</div><div>▲ NA</div></div> <div>Baro-VNAV NA. DME/DME RNP-0.3 NA. Use Gadsden altimeter setting, when not received, use Anniston altimeter setting and increase all DA/MDA 20 feet.</div>	MISSED APPROACH: Climb to 1500 then climbing right turn to 3600 direct WEBIL and hold.
---	--

GAD AWOS-3PT 127.825	ATLANTA CENTER 124.5 270.325	CTAF 122.9
--------------------------------	--	----------------------



ELEV 595

TDZE 595

247° to RW25

5500 X 100

25

1500

3600

WEBIL

TENKE 2500

RW25

2500

5.9 NM

6.1 NM

4 NM Holding Pattern

067°

247°

3600

GP 3.00°

TCH 40

CATEGORY	A	B	C	D
LPV DA	856-7 ⁸ / ₈ 261 (300-7 ⁸ / ₈)			
LNAV/VNAV DA	1064-1 ⁵ / ₈ 469 (500-1 ⁵ / ₈)			
LNAV MDA	1180-1 585 (600-1)		1180-1 ³ / ₄ 585 (600-1 ³ / ₄)	
CIRCLING	1180-1 585 (600-1)		1180-1 ³ / ₄ 585 (600-1 ³ / ₄)	1180-2 585 (600-2)

SE-4, 03 DEC 2020 to 31 DEC 2020

SE-4, 03 DEC 2020 to 31 DEC 2020