

WAAS CH 45721 W23A	APP CRS 233°	Rwy Idg TDZE 210 Apt Elev 215
--	------------------------	---

RNAV (GPS) RWY 23

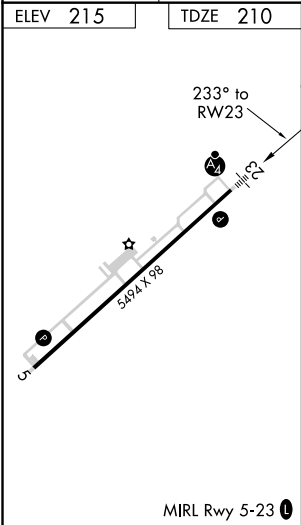
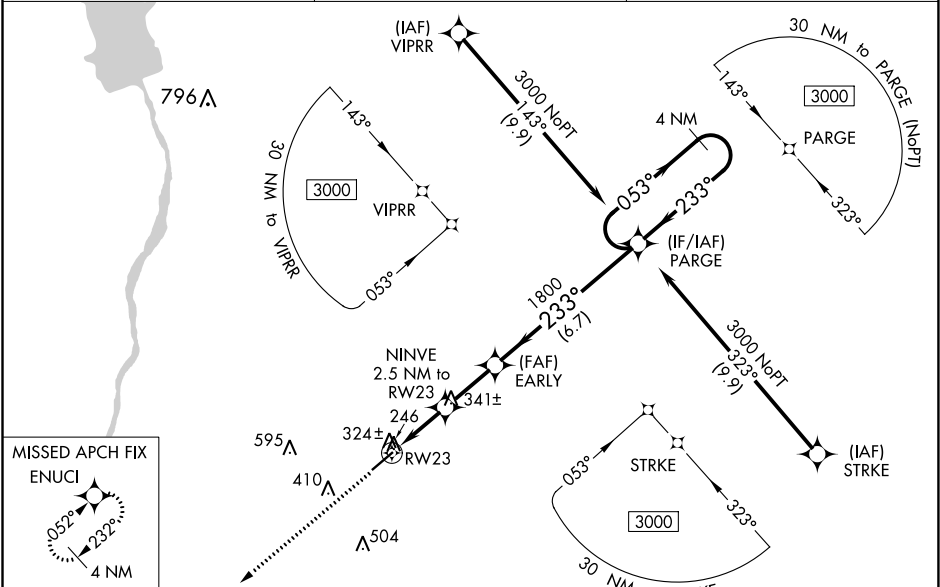
EARLY COUNTY (BIJ)


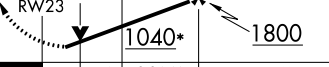
⚠ Inop table does not apply to LPV, LNAV/VNAV and LNAV Cat A/B. For uncompensated Baro-VNAV systems, LNAV/VNAV NA below -15°C (5°F) or above 42°C (107°F). Rwy 5, 23 helicopter visibility reduction below 1 SM NA. DME/DME RNP-0.3 NA. When local altimeter setting not received, use Bainbridge altimeter setting: increase LPV DA to 578 feet, LNAV/VNAV DA to 587 feet; increase all MDAs 80 feet and visibility LNAV Cat C and D ½ SM. For inop ALS, increase LNAV Cat C/D visibility to 1½ SM. Baro-VNAV and VDP NA when using Bainbridge altimeter setting.

MALSF

MISSED APPROACH:
Climb to 2000 direct
ENUCI and hold.

AWOS-3PT 118.475	CAIRNS APP CON ★ 125.4 327.125	CTAF 122.9 0
----------------------------	--	------------------------



2000 ↑		ENUCI 		VGSI and RNAV glidepath not coincident (VGSI Angle 3.00/TCH 30).		4 NM Holding Pattern			
*LNAV only.		NINVE 2.5 NM to RW23		EARLY 1800		PARGE			
		1.1 NM to RW23		1040		053° → ← 233° 3000			
		1.1 1.4		2.3 NM		6.7 NM			
						GP 3.00° TCH 57			
CATEGORY		A		B		C		D	
LPV DA				501-1		291 (300-1)			
LNAV/ VNAV DA				510-1		300 (300-1)			
LNAV MDA				600-1		390 (400-1)			
CIRCLING		720-1		505 (600-1)		720-1½ 505 (600-1½)		780-2 565 (600-2)	