

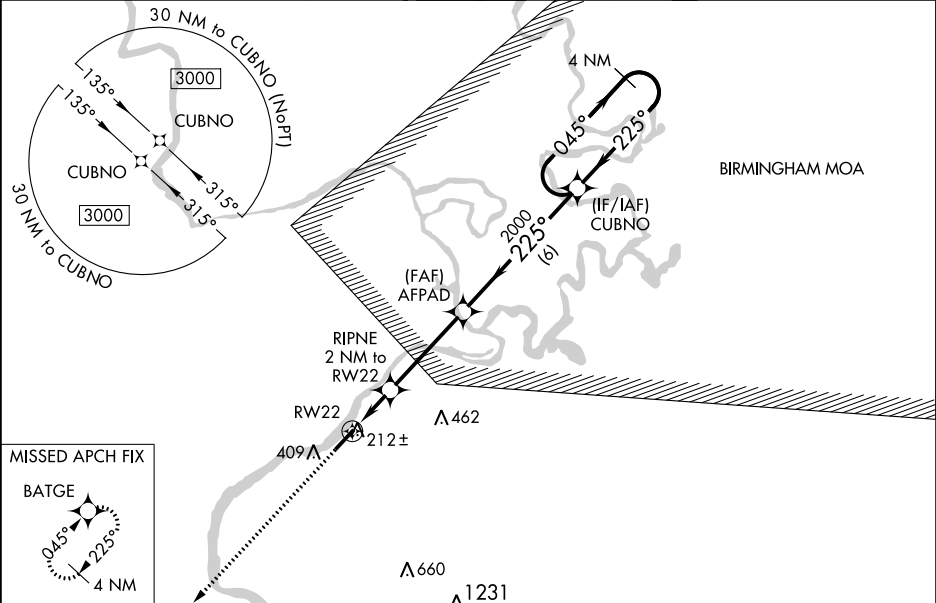
WAAS CH 97339 W22A	APP CRS 225°	Rwy Idg TDZE 5002 107 Apt Elev 112
--	------------------------	--

RNAV (GPS) RWY 22
DEMOPOLIS RGNL (D Y A)

⚠ For uncompensated Baro-VNAV systems, LNAV/VNAV NA below -15°C (5°F) or above 54°C (130°F). DME/DME RNP-0.3 NA. When local altimeter setting not received, use Marion altimeter setting and increase LPV and LNAV/VNAV DA 82 feet and all MDA 100 feet; increase LPV all Cats visibility ¼ mile, increase LNAV/VNAV all Cats and LNAV Cats C/D visibility ⅜ mile, increase Circling Cat C visibility ¼ mile, and Circling Cat D visibility ½ mile. Baro-VNAV and VDP NA when using Marion altimeter setting. Helicopter visibility reduction below ¾ SM NA.

MISSED APPROACH:
Climb to 3000 direct BATGE and hold.

AWOS-3P 119.475	MERIDIAN APP CON* 119.2 348.7	UNICOM 122.8 (CTAF) 0
---------------------------	---	---------------------------------



ELEV 112 TDZE 107

225° to RW22

5002 X 100'

MIRL Rwy 4-22 0

3000	BATGE	VGSI and RNAV glidepath not coincident (VGSI Angle 3.25/TCH 43).				4 NM Holding Pattern
*LNAV only.		RIPNE 2NM to RW22	AFPAD 2000	CUBNO		
		*1 NM to RW22				
			*780	2000		GP 3.00° TCH 40
		1 NM	1 NM	3.8 NM	6 NM	
CATEGORY	A	B	C	D		
LPV DA		369-7/8	262 (300-7/8)			
LNAV/VNAV DA		385-7/8	278 (300-7/8)			
LNAV MDA		480-1	373 (400-1)			
CIRCLING	720-1	608 (700-1)	720-1 3/4 608 (700-1 3/4)	780-2 668 (700-2)		

SE-4, 03 DEC 2020 to 31 DEC 2020

SE-4, 03 DEC 2020 to 31 DEC 2020