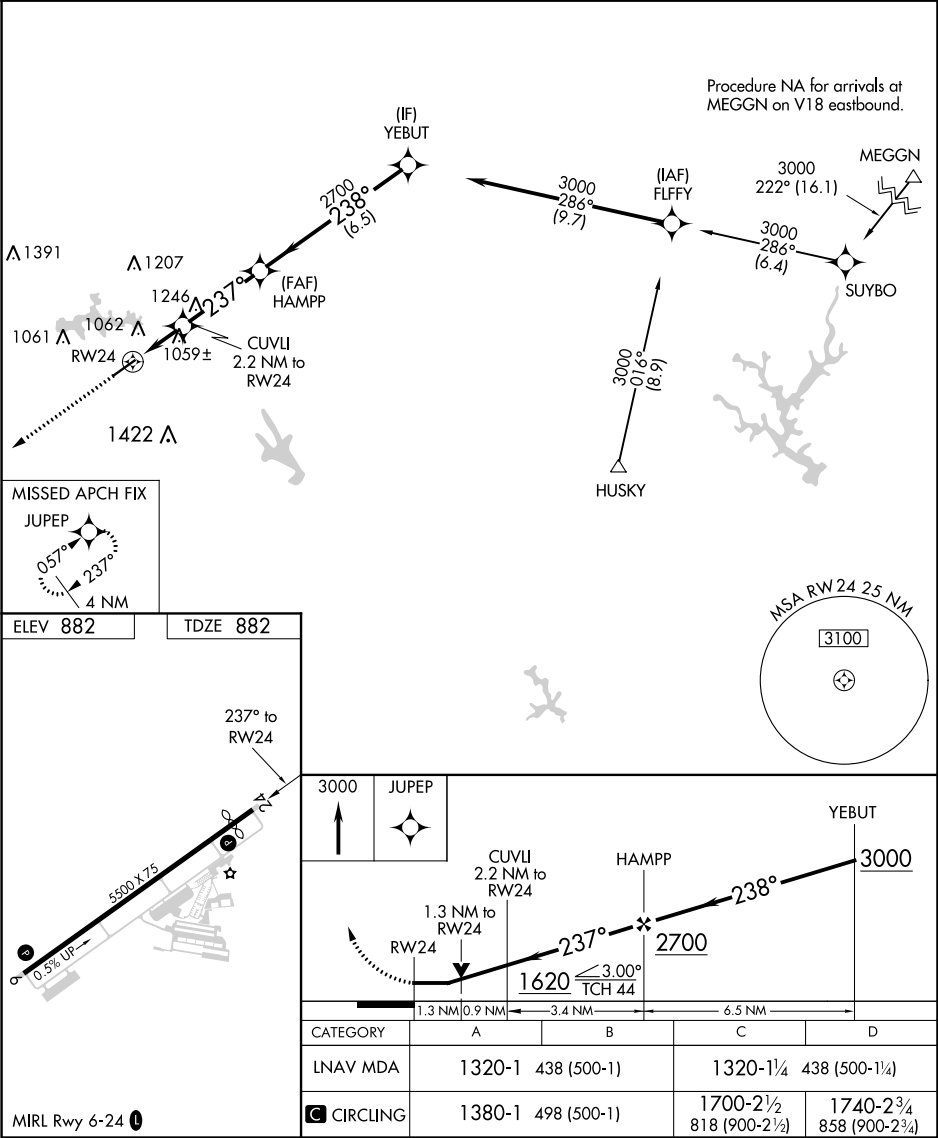


APP CRS	Rwy Idg	5010
237°	TDZE	882
	Apt Elev	882

RNAV (GPS) RWY 24

HENRY COUNTY (HMP)

RNP APCH.				MISSED APPROACH: Climb to 3000 direct JUPEP and hold.
<div><div><div></div><div>NA</div></div></div> <div>Rwy 24 helicopter visibility reduction below ¾ SM NA. VDP NA when using Hartsfield-Jackson Atlanta Intl altimeter setting. When local altimeter setting not received, use Hartsfield-Jackson Atlanta Intl altimeter setting and increase all MDA 60 feet; increase LNAV Cats C/D visibility ½ mile and Circling Cat D visibility ¼ mile. Circling Rwy 6 NA at night.</div>				
AWOS-3 124.825		ATLANTA APP CON 128.575 343.675		CLNC DEL 128.575 343.675
UNICOM 122.725 (CTAF) 1				



SE-4, 03 DEC 2020 to 31 DEC 2020

SE-4, 03 DEC 2020 to 31 DEC 2020