


WAAS CH <b>77721</b> <b>W13A</b>	APP CRS <b>125°</b>	Rwy Idg TDZE Apt Elev	<b>5501</b> <b>431</b> <b>439</b>
--	------------------------	-----------------------------	---

RNAV (GPS) RWY 13  
KAOLIN FIELD (OKZ)

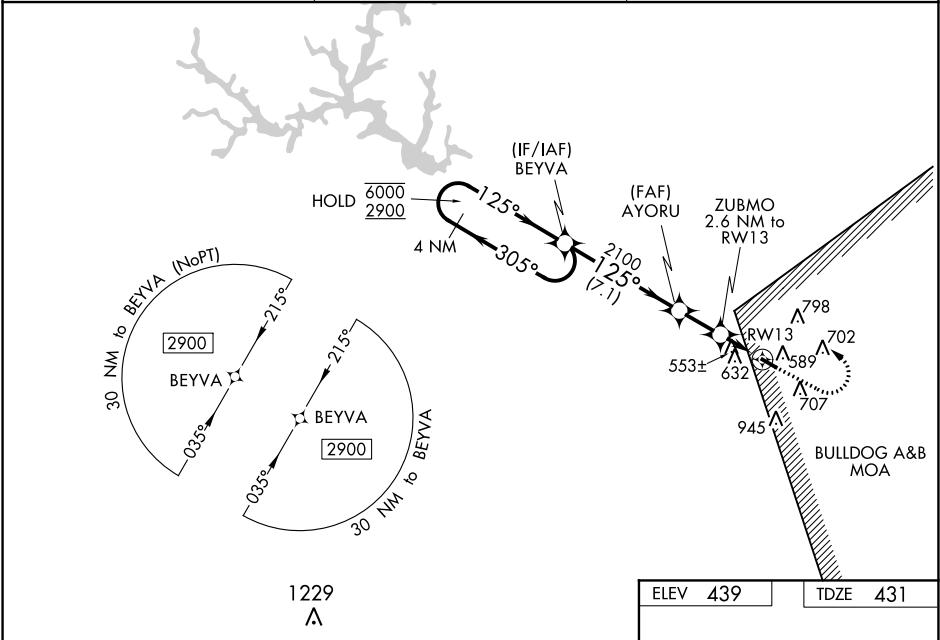
RNP APCH.



Rwy 13 helicopter visibility reduction below 3/4 SM NA.  
For uncompensated Baro-VNAV systems, LNAV/VNAV  
NA below -15°C or above 54°C.

MISSED APPROACH: Climb to 1100 then climbing left turn to  
2900 direct BEYVA and hold.

AWOS-3 <b>120.575</b>	ATLANTA APP CON ★ <b>124.2 279.6</b>	UNICOM <b>123.0 (CTAF) 0</b>
--------------------------	---	---------------------------------



VGSI and RNAV glidepath not coincident (VGSI Angle 3.00/TCH 38).

4 NM Holding Pattern

6000 2900

GP 3.00° TCH 45

BEYVA

AYORU

ZUBMO 2.6 NM to RW13

\*1280

2100

125° to RW13

0.5% Up

5501 X 75

REIL Rwy 13 0

MIRL Rwy 13-31 0

CATEGORY	A	B	C	D
LPV DA	691-3/4	260 (300-3/4)		NA
LNAV/VNAV DA	700-7/8	269 (300-7/8)		NA
LNAV MDA	820-1	389 (400-1)	820-1 1/8 389 (400-1 1/8)	NA
CIRCLING	1000-1 561 (600-1)	1120-1 681 (700-1)	1240-2 1/4 801 (900-2 1/4)	NA