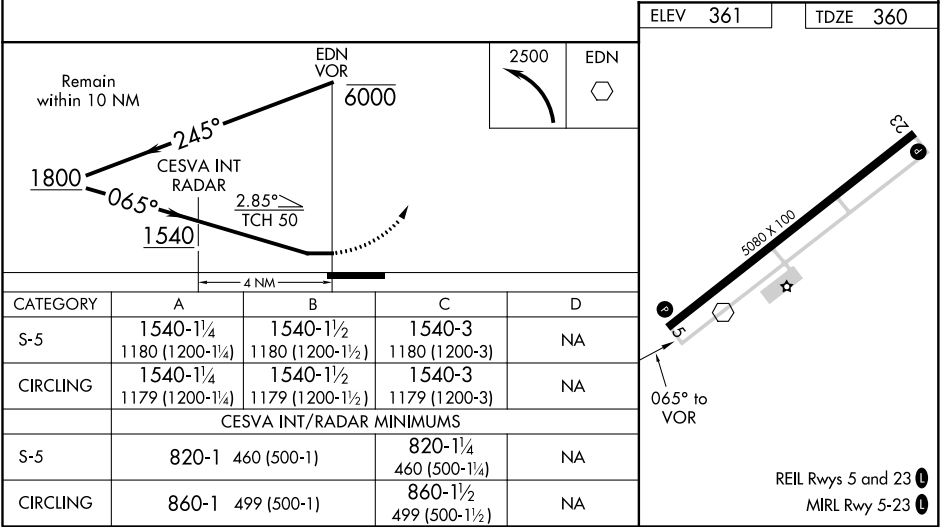
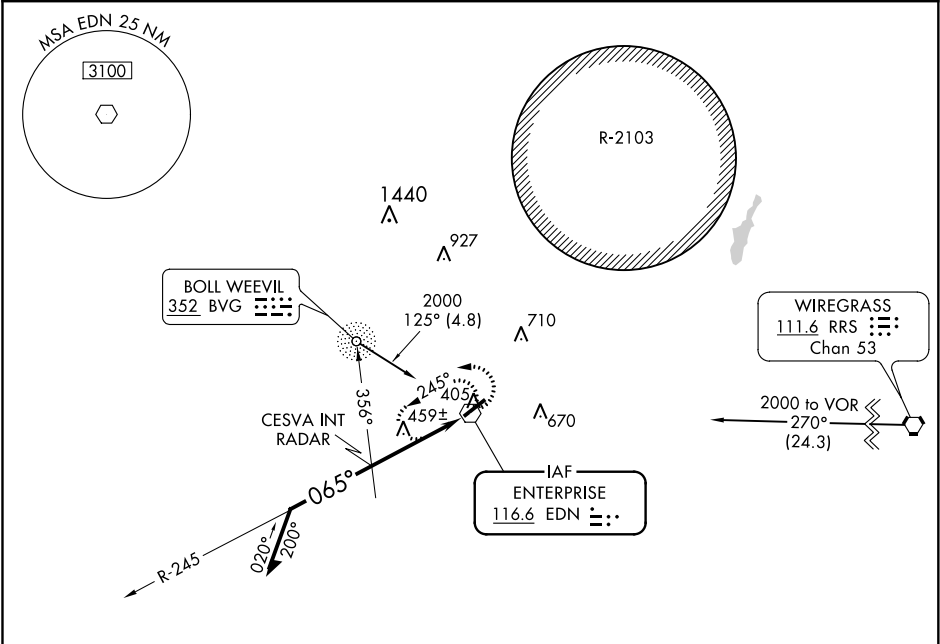


VOR EDN 116.6	APP CRS 065°	Rwy Idg 5080 TDZE 360 Apt Elev 361
-------------------------	------------------------	---

VOR RWY 5
ENTERPRISE MUNI(EDN)

ADF or RADAR Required. NA Use Cairns AAF (Fort Rucker) altimeter setting.	MISSED APPROACH: Climbing left turn to 2500 in EDN VOR holding pattern.
--	--

AWOS-3PT 118.9	CAIRNS APP CON ★ 133.45 239.275	UNICOM 122.8 (CTAF) 0
--------------------------	---	---------------------------------



SE-4, 03 DEC 2020 to 31 DEC 2020

SE-4, 03 DEC 2020 to 31 DEC 2020