

WAAS CH 97308 W27A	APP CRS 273°	Rwy Idg TDZE 1011 Apt Elev 1040
--	------------------------	---

RNAV (GPS) RWY 27

COBB COUNTY INTL-McCOLLUM FIELD (RYY)

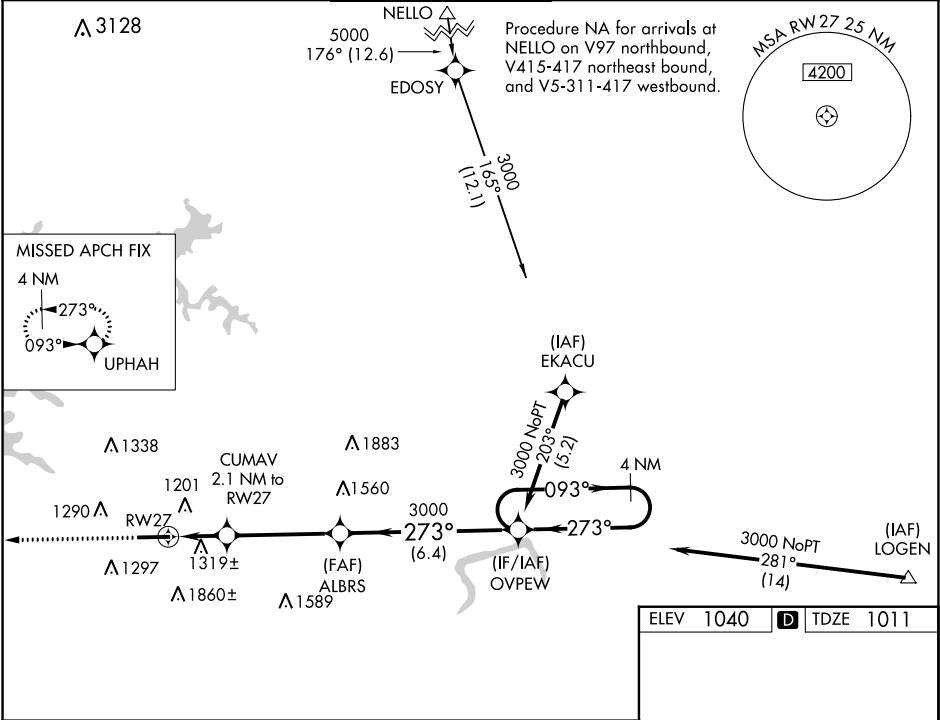
▼

Baro-VNAV NA when using Hartsfield-Jackson Atlanta Intl altimeter setting.
For uncompensated Baro-VNAV systems, LNAV/VNAV NA below -17°C (2°F) or above 37°C (98°F). DME/DME RNP-0.3 NA. When local altimeter setting not received, use Hartsfield-Jackson Atlanta Intl altimeter setting and increase all DA/MDA 60 feet; increase LPV all Cats and LNAV Cats C and D visibility ½ mile; increase Circling Cat C visibility ¼ mile.

MALSF

MISSED APPROACH:
Climb to 3000 direct UPHAH and hold.

ATIS 128.125	ATLANTA APP CON 121.0 268.7	McCOLLUM TOWER * 125.9 (CTAF) 0	GND CON 119.0	CLNC DEL 119.0 268.7	UNICOM 122.7
------------------------	---------------------------------------	---	-------------------------	--------------------------------	------------------------



3000	UPHAH	ELEV 1040	TDZE 1011
3000	UPHAH	ALBRS	OVPEW
* LNAV only	CUMAV 2.1 NM to RW27	3000	4 NM Holding Pattern
RW27	1700*	273°	093°
2.1 NM	4 NM	6.4 NM	GP 3.00° TCH 46
CATEGORY	A	B	C
LPV DA	1211-3/4	200 (200-3/4)	D
LNAV/VNAV DA	1680-2 1/2	669 (700-2 1/2)	
LNAV MDA	1580-1 569 (600-1)	1580-1 3/4 569 (600-1 3/4)	
CIRCLING	1780-1 740 (800-1)	1780-2 740 (800-2)	2220-3 1180 (1200-3)
HIRL Rwy 9-27 0			