

WAAS
CH **40227**
W11A

APP CRS
114°

Rwy Idg
TDZE **191**
Apt Elev **195**

RNAV (GPS) RWY 11

SWINTON SMITH FIELD AT REIDSVILLE MUNI (RVJ)

RNP APCH

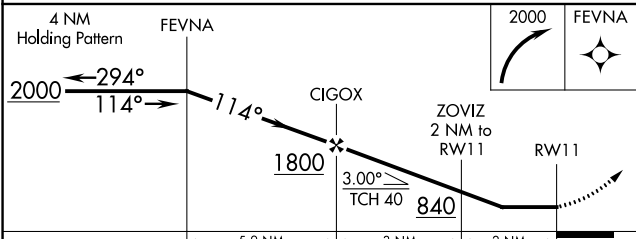
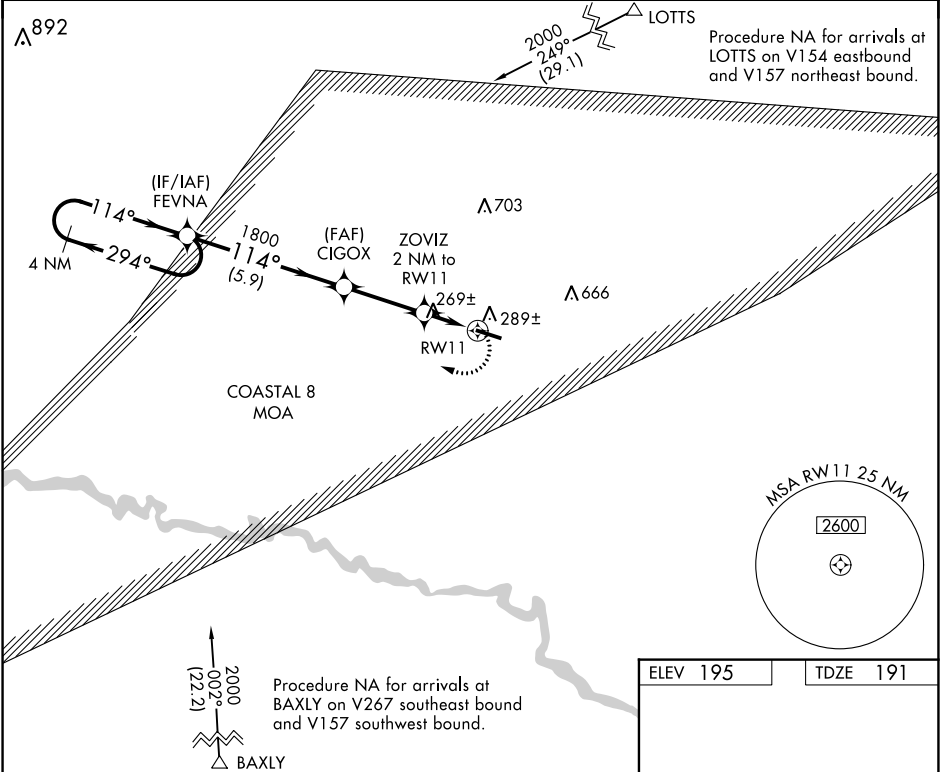
Procedure NA at night. Rwy 11 helicopter visibility reduction below 1 SM NA. When local altimeter setting not received, use Vidalia altimeter setting.

MISSED APPROACH: Climbing right turn to 2000 direct FEVNA and hold.

AWOS-3PT
128.325

JACKSONVILLE CENTER
127.575 269.025

CTAF
122.9 0



ELEV 195

TDZE 191

MIRL Rwy 11-29 0

CATEGORY	A		B	C	D
LP MDA	580-1	389 (400-1)		580-1 $\frac{1}{8}$ 389 (400-1 $\frac{1}{8}$)	NA
LNNAV MDA	600-1	409 (500-1)		600-1 $\frac{1}{4}$ 409 (500-1 $\frac{1}{4}$)	NA
CIRCLING	680-1	485 (500-1)		680-1 $\frac{1}{2}$ 485 (500-1 $\frac{1}{2}$)	NA