

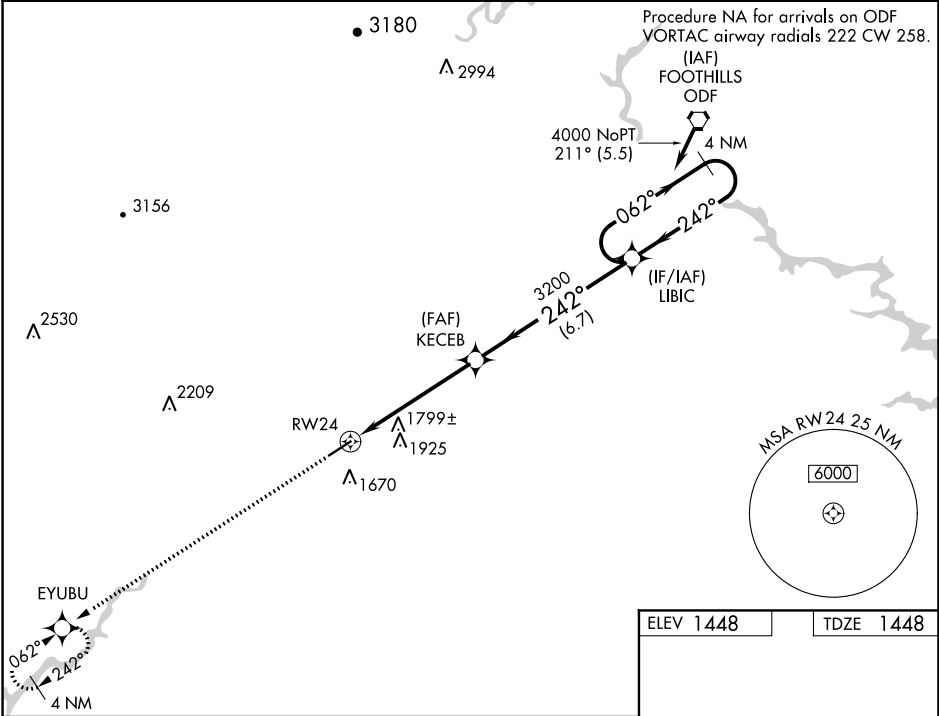
WAAS CH 49121 W24A	APP CRS 242°	Rwy Idg TDZE 1448 Apt Elev 1448
--	------------------------	---

RNAV (GPS) RWY 24
HABERSHAM COUNTY (AJR)

NA DME/DME RNP-0.3 NA. Rwy 24 helicopter visibility reduction below 1 SM NA. When local altimeter setting not received use Gainesville altimeter setting and increase all DA 69 feet and all MDA 80 feet: increase visibility LPV and LNAV/VNAV all Cats ¼ mile, LNAV Cat C and D ½ mile, Circling Cat C and D ½ mile. When VGSi inop, Straight-in/Circling Rwy 24 procedure NA at night. Baro-VNAV NA when using Gainesville altimeter setting. For uncompensated Baro-VNAV systems, LNAV/VNAV NA below -17°C (2°F) or above 34°C (93°F).

MISSED APPROACH:
Climb to 4000 direct EYUBU and hold.

AWOS-3 119.175	ATLANTA CENTER 134.8 379.95	UNICOM 122.7 (CTAF) 0
--------------------------	---------------------------------------	---------------------------------



4000	EYUBU	VGSI and RNAV glidepath not coincident (VGSI Angle 3.50/TCH 40).		LIBIC	4 NM Holding Pattern
RW24		3200	3200	3200	4000
5.3 NM		6.7 NM	GP 3.00° TCH 53		
CATEGORY	A	B	C	D	
LPV DA	1852-1 ³ / ₈		404 (500-1 ³ / ₈)		
LNAV/VNAV DA	2154-2 ¹ / ₂		706 (800-2 ¹ / ₂)		
LNAV MDA	2060-1	612 (700-1)	2060-1 ³ / ₄	612 (700-1 ³ / ₄)	
CIRCLING	2060-1 612 (700-1)	2100-1 652 (700-1)	2100-1 ³ / ₄ 652 (700-1 ³ / ₄)	2240-2 ¹ / ₂ 792 (800-2 ¹ / ₂)	

