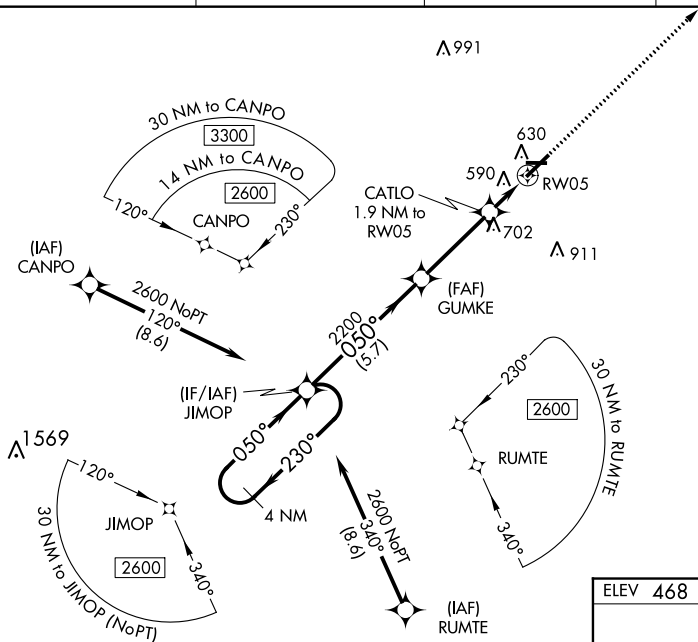


RNAV (GPS) RWY 5
JIMMY CARTER RGNL (ACJ)

Baro-VNAV NA when using Columbus altimeter setting. For uncompensated Baro-VNAV systems, LNAV/VNAV NA below -1.5°C or above 40°C. Rwy 5 helicopter visibility reduction below $\frac{3}{4}$ SM NA. When local altimeter setting not received, use Columbus altimeter setting and increase LPV DA to 832 and visibility $\frac{1}{4}$ SM, LNAV/VNAV DA to 954 and visibility $\frac{3}{8}$ SM; increase all MDA 120 feet and LNAV CATs C and D visibility $\frac{3}{8}$ SM, and Circling Cat D visibility $\frac{1}{4}$ SM. Circling Rwy 10, 28 NA at night.

MISSED APPROACH:
Climb to 2600 direct
HASER and hold.

UNICOM
122.8 (CTAF) **L**

ELEV 468		TDZE 468
----------	--	----------

4 NM Holding Pattern

JIMOP

VGSI and RNAV glidepath not coincident (VGSI Angle 3.00/TCH 58).

GUMKE

CATLO 1.9 NM to RW05

RW05

2600

230°

050°

050°

2200

GP 3.00° TCH 45

*1100

2600

HASER

*LNAV only

CATEGORY		A		B		C		D	
LPV	DA			718-1		250 (300-1)			
LNNAV/ VNAV	DA			840-1		372 (400-1)			
LNNAV	MDA			840-1		372 (400-1)			
CIRCLING		940-1	472 (500-1)			940-1½ 472 (500-1½)	1020-2 552 (600-2)		

