

WAAS CH 77528 W32A	APP CRS 322°	Rwy Idg 5500 TDZE 952 Apt Elev 970
--	------------------------	---

RNAV (GPS) RWY 32

NEWNAN COWETA COUNTY (CCO)

RNP APCH.

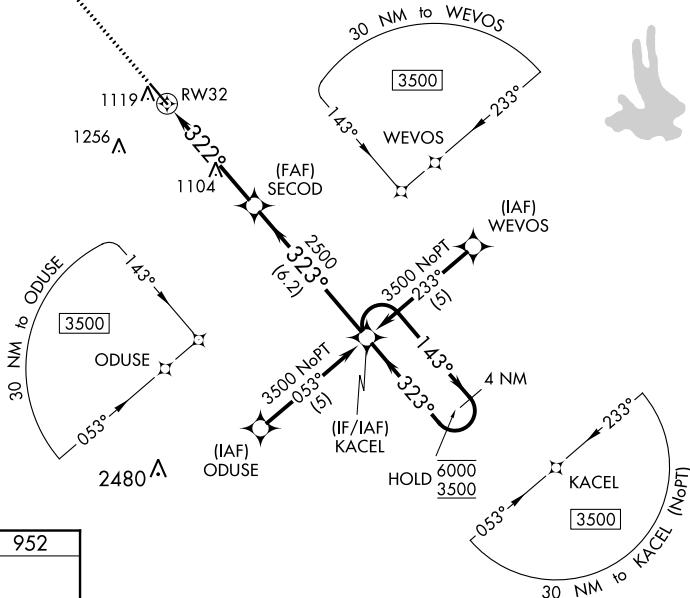
T For uncompensated Baro-VNAV systems, LNAV/VNAV NA below -16°C or above 46°C.
For inop ALS, increase LPV and LNAV/VNAV all Cats and LNAV Cats C/D visibilities to 1½ SM.
Rwy 32 helicopter visibility reduction below ¾ SM NA.

MALSF

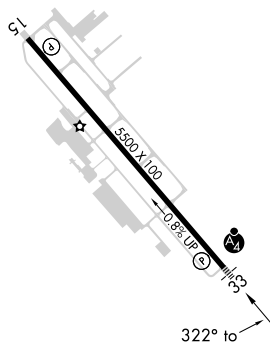
MISSED APPROACH:
Climb to 3500 direct
DECEG and hold.

AWOS-3PT 118.975	ATLANTA APP CON 119.8 354.125	CLNC DEL 119.8	GCO 121.725	UNICOM 122.7 (CTAF) 0
----------------------------	---	--------------------------	-----------------------	---------------------------------

MISSED APCH FIX



ELEV 970		TDZE 952
----------	--	----------

HIRL Rwy 15-33 **L**

3500 DECEG

*RNAV only.

RW32

1.2 NM

322°

2500

323°

6.2 NM

2500

323°

143°

4 NM Holding Pattern

KACEL

3500

6000

GP 3.00°
TCH 40

CATEGORY	A	B	C	D
LPV DA		1242-1	290 (300-1)	
RNAV/ VNAV DA		1286-1	334 (400-1)	
RNAV MDA		1360-1	408 (400-1)	
C CIRCLING	1420-1	450 (500-1)	1560-1½ 590 (600-1½)	1560-2 590 (600-2)