

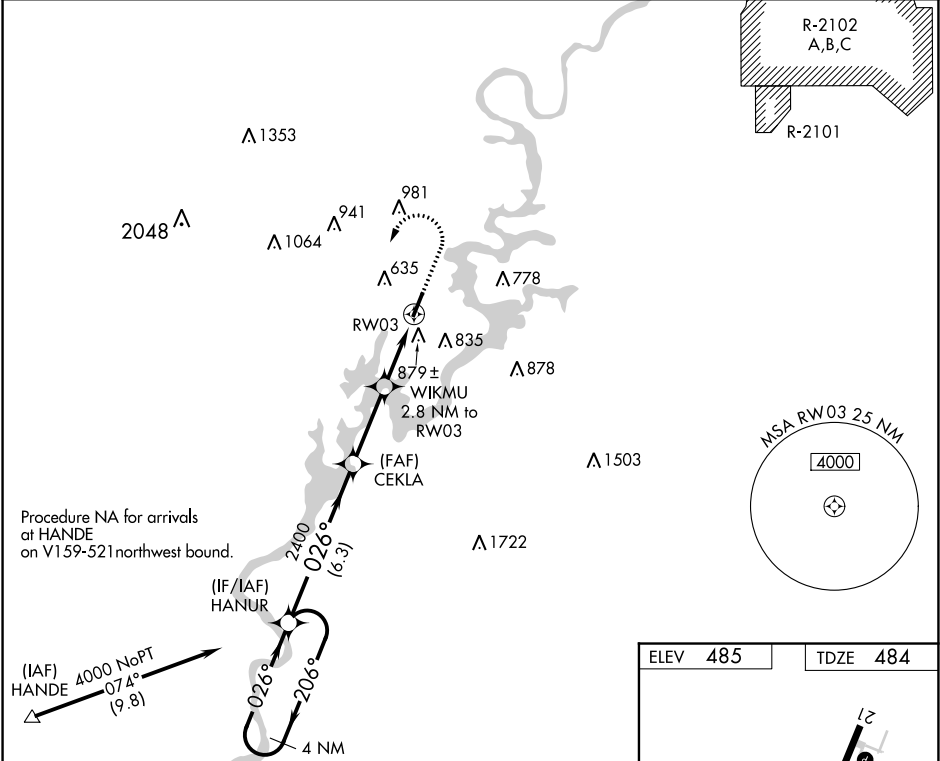
WAAS CH <b>70540</b> <b>W03A</b>	APP CRS <b>026°</b>	Rwy Idg TDZE <b>484</b> Apt Elev <b>485</b>
--	------------------------	---

**RNAV (GPS) RWY 3**  
ST CLAIR COUNTY (PLR)

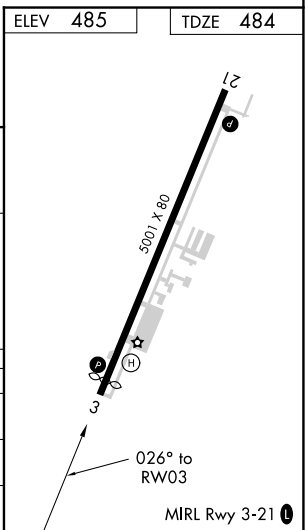
**⚠** DME/DME RNP-0.3 NA. VDP NA when using Anniston altimeter setting. Rwy 3, helicopter visibility reduction below 3/4 SM NA. When local altimeter setting not received, use Anniston altimeter setting and increase all DA 63 feet and all visibility 1/4 SM, increase all MDA 80 feet and LNAV Cat C/D visibility 1/8 SM and Circling Cat C/D 1/4 SM.

**MISSED APPROACH:** Climb to 1200, then climbing left turn to 4000 direct HANUR and hold, continue climb-in-hold to 4000.

AWOS-3P <b>119.625</b>	BIRMINGHAM APP CON <b>123.8 256.8</b>	GCO <b>121.725</b>	UNICOM <b>123.05 (CTAF) 0</b>
---------------------------	--	-----------------------	----------------------------------



4 NM Holding Pattern		VGSI and descent angles not coincident (VGSI Angle 3.00/TCH 53).		1200	4000	HANUR
4000		2400		CEKLA	WIKMU	
GP 3.10° TCH 52		1440*		2.8 NM to RWY 03	1.9 NM to RWY 03	
6.3 NM		2.9 NM		0.9 NM	1.9 NM	
CATEGORY	A	B	C	D		
LPV DA	835-1 1/8		351 (400-1 1/8)			
LNAV MDA	1140-1	656 (700-1)	1140-1 7/8	656 (700-1 7/8)		
CIRCLING	1180-1	695 (700-1)	1240-2 1/4	855 (900-2 3/4)		



SE-4, 03 DEC 2020 to 31 DEC 2020

SE-4, 03 DEC 2020 to 31 DEC 2020