

WAAS CH 82318 W28A	APP CRS 276°	Rwy Idg TDZE Apt Elev	5509 379 385
--	------------------------	-----------------------------	---

RNAV (GPS) RWY 28

BALDWIN COUNTY RGNL (MLJ)

RNP APCH.

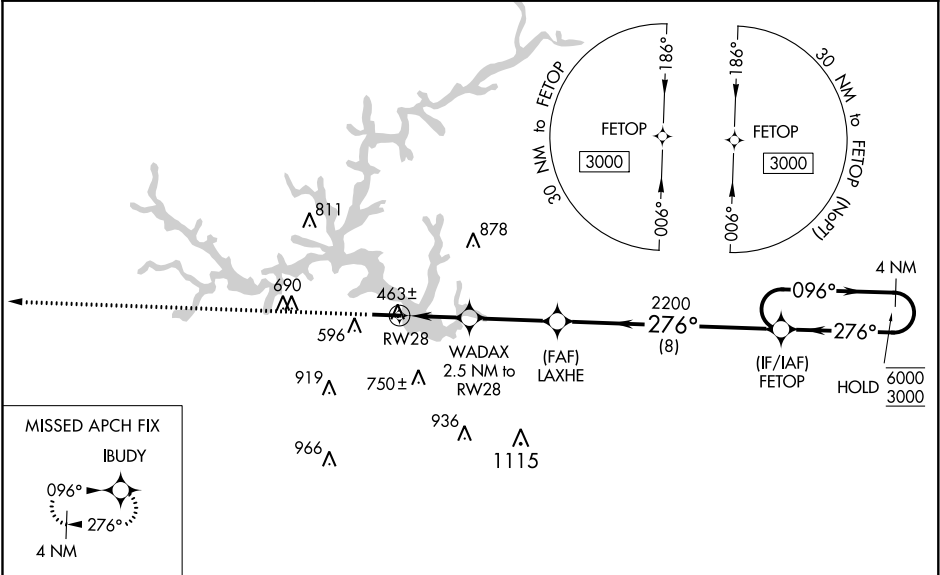
▼

▲

Baro-VNAV and VDP NA when using Middle Georgia Rgnl altimeter setting. Rwy 28 helicopter visibility reduction below ¾ SM NA. For uncompensated Baro-VNAV systems, LNAV/VNAV NA below -15°C or above 54°C. When local altimeter setting not received, use Middle Georgia Rgnl altimeter setting: increase LPV DA to 754; increase LNAV/VNAV DA to 783 and all visibilities ½ SM; increase all MDA 100 feet and LNAV visibility Cats C/D ½ SM and Circling visibility Cat C ½ SM.

MISSED APPROACH:
Climb to 3000 direct
IBUDY and hold.

AWOS-3 120.925	ATLANTA APP CON ★ 124.2 279.6	UNICOM 122.975 (CTAF) 0
--------------------------	---	-----------------------------------



ELEV 385	TDZE 379
-----------------	-----------------

3000

IBUDY

*LNAV only.

*1 NM to RW28

WADAX 2.5 NM to RW28

LAXHE 2200

FETOP

4 NM Holding Pattern

5509 X 100

0.5% UP

276° to RW28

GP 3.00°

TCH 44

CATEGORY	A	B	C	D
LPV DA		670-1	291 (300-1)	
LNAV/VNAV DA		699-1	320 (400-1)	
LNAV MDA		720-1	341 (400-1)	
CIRCLING	920-1 535 (600-1)	940-1 555 (600-1)	1100-2 715 (800-2)	1280-3 895 (900-3)