

NDB UMB <u>380</u>	APP CRS 276°	Rwy Idg 5509 TDZE 379 Apt Elev 385
------------------------------	------------------------	---

NDB RWY 28
BALDWIN COUNTY RGNL (MLJ)

T Rwy 28 helicopter visibility reduction below $\frac{3}{4}$ SM NA.
A NA When local altimeter setting not received, use Middle Georgia Rgnl altimeter setting and increase all MDA 100 feet and increase S-28 visibility Cat C/D $\frac{1}{4}$ SM and Circling Cat C $\frac{1}{2}$ SM.

MISSED APPROACH: Climb to 1400 then climbing left turn to 2400 direct UMB NDB and hold.

AWOS-3 120.925	ATLANTA APP CON ★ 124.2 279.6	UNICOM 122.975 (CTAF) 0
--------------------------	---	-----------------------------------

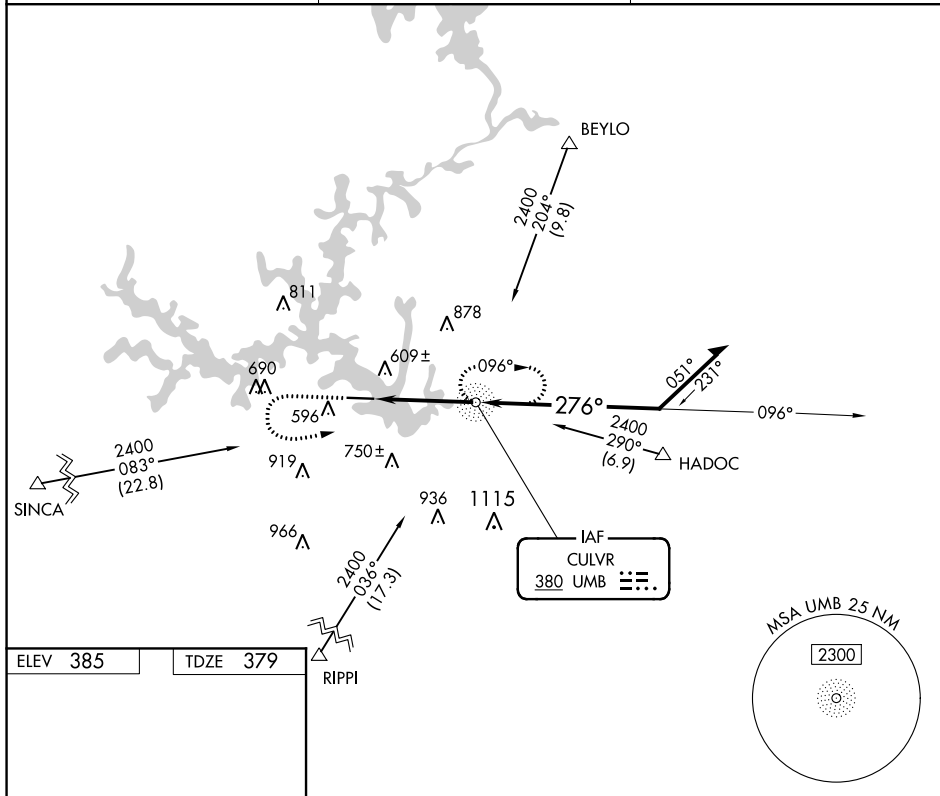


Figure 10-1 is a sample Instrument Landing System (ILS) chart for MRL Rwy 10-28. The chart shows a 3.7 NM FAF to MAP segment at 276° from the FAF. The MRL Rwy 10-28 is shown with a 5509 X 100 runway. The chart includes a 3.07° TCH 44, a 1600' obstacle, and a 2400' obstacle. The chart also includes a table for CATEGORY A, B, C, and D, showing S-28, 960-1, 581 (600-1), 960-1 3/4, 581 (600-1 3/4), 1100-2, 715 (800-2), 1280-3, and 895 (900-3).

CATEGORY	A	B	C	D
S-28	960-1	581 (600-1)	960-1 3/4	581 (600-1 3/4)
CIRCLING	960-1	575 (600-1)	1100-2 715 (800-2)	1280-3 895 (900-3)