

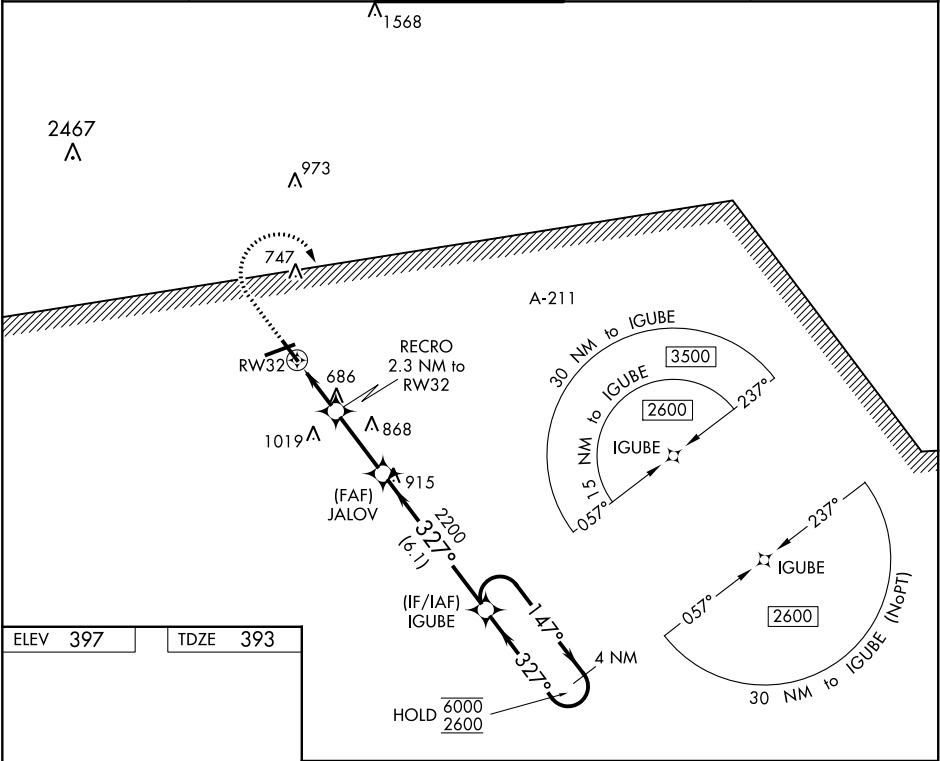
RNP APCH.

ASR/PAR

Rwy 32 helicopter visibility reduction below 1 SM NA.
Rwy 32 Straight-in and Circling and Circling Rwy 14 NA at night.

MISSED APPROACH: Climb to 1200 then climbing right turn to 2600 direct IGUBE and hold.

ATIS 120.925	CAIRNS APP CON★ 121.1 319.25	TROY TOWER ★ 124.3 (CTAF) 0 306.9	GND CON 121.9 294.7	UNICOM 122.8
-----------------	---------------------------------	--------------------------------------	------------------------	-----------------



MRL Rwy 7-25 and 14-32

327° to RW32

0.6%

6197'

5024'

TWR 471

1200

2600

IGUBE

Visual Segment - Obstacles.

IGUBE

4 NM Holding Pattern

JALOV

RECRO 2.3 NM to RW32

2200

1220

2.3 NM

2.8 NM

6.1 NM

CATEGORY	A	B	C	D
LP MDA	940-1	547 (600-1)	940-1 ⁵ / ₈	547 (600-1 ⁵ / ₈)
LNAV MDA	960-1	567 (600-1)	960-1 ³ / ₄	567 (600-1 ³ / ₄)
CIRCLING	1000-1	603 (700-1)	1300-2 ³ / ₄ 903 (1000-2 ³ / ₄)	1380-3 983 (1000-3)