

WAAS CH 61008 W04A	APP CRS 038°	Rwy Idg 6032 TDZE 511 Apt Elev 529
--	------------------------	---

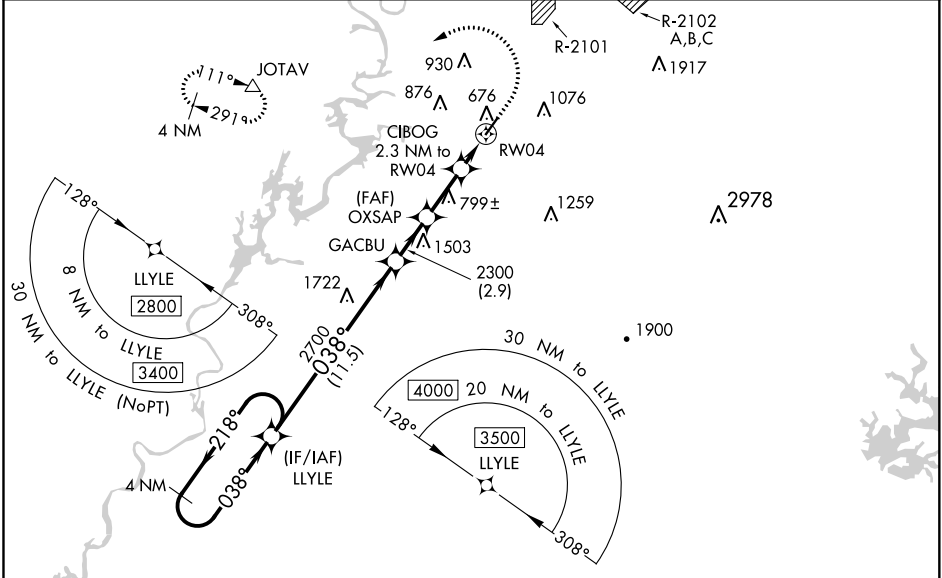
RNAV (GPS) RWY 4

TALLADEGA MUNI (ASN)

⚠ Baro-VNAV NA when using Anniston altimeter setting. For uncompensated Baro-VNAV systems, LNAV/VNAV NA below -1.6°C (4°F) or above 54°C (130°F). DME/DME RNP-0.3 NA. VDP NA with Anniston altimeter setting. When local altimeter setting not received, use Anniston altimeter setting and increase LPV DA to 744, LNAV/VNAV DA to 830, and all MDA 40 feet; increase LNAV/VNAV all Cats visibility and LNAV Cats C/D visibility 1/8 mile, and Circling Cat C visibility 1/4 mile.

MISSED APPROACH:
Climb to 1300 then climbing left turn to 3700 direct JOTAV and hold.

AWOS-3PT 118.425	BIRMINGHAM APP CON 132.15 285.45	UNICOM 122.8 (CTAF) 0
----------------------------	--	---------------------------------



ELEV 529

TDZE 511

VGSI and RNAV glidepath not coincident (VGSI Angle 3.00/TCH 65).

4 NM Holding Pattern

LLYLE

2800 ← 218°

038° →

GP 3.00° TCH 45

GACBU

OXSAP 2300

CIBOG 2300

2.3 NM to RWY 04

*1.5 NM to RWY 04

RWY 04

*1280

2700

2300

11.5 NM

2.9 NM

3.2 NM

0.8 NM

1.5 NM

*RNAV only.

JOTAV

3700

1300

038° to RWY 04

REIL Rwy 4 0

HIRL Rwy 4-22 0

CATEGORY	A	B	C	D
LPV DA		711-3/4	200 (200-3/4)	
LNAV/VNAV DA		797-7/8	286 (300-7/8)	
LNAV MDA	1060-1	549 (600-1)	1060-1 1/8	549 (600-1 1/8)
CIRCLING	1140-1 611 (700-1)	1180-1 651 (700-1)	1380-2 1/2 851 (900-2 1/2)	1500-3 971 (1000-3)