

WAAS CH <b>99313</b> <b>W19A</b>	APP CRS <b>190°</b>	Rwy Idg <b>6604</b> TDZE <b>91</b> Apt Elev <b>91</b>
--	------------------------	---

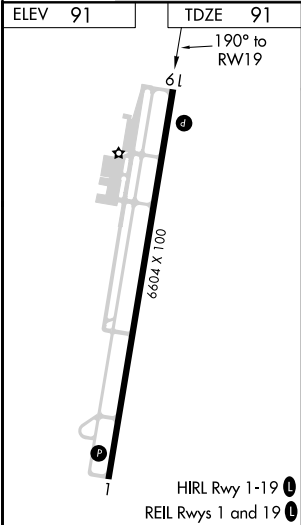
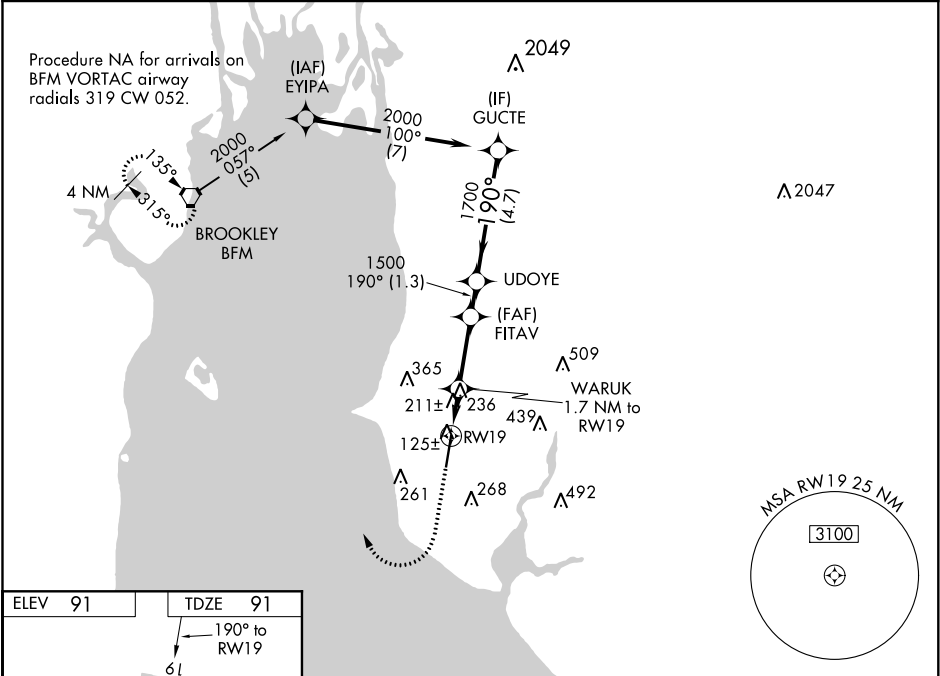
RNAV (GPS) RWY 19  
H L SONNY CALLAHAN (CQF)

**T** Baro-VNAV NA when using Mobile Downtown altimeter setting. For uncompensated Baro-VNAV systems, LNAV/VNAV NA below -15°C (5°F) or above 43°C (109°F).

**A** DME/DME RNP-0.3 NA. VDP NA with Mobile Downtown altimeter setting. When local altimeter setting not received, use Mobile Downtown altimeter setting and increase all DA 42 feet and all MDA 60 feet and increase LPV and LNAV/VNAV all Cats visibility 1/8 mile and LNAV Cats C and D visibility 1/4 mile.

MISSED APPROACH: Climb to 1500 then climbing right turn to 2000 direct BFM Vortac and hold.

AWOS-3PT <b>118.425</b>	MOBILE APP CON ★ <b>118.5 269.3</b>	UNICOM <b>123.0 (CTAF) 0</b>
----------------------------	--	---------------------------------



1500	2000	BFM							
*LNAV only.									
RWY19 1.2 NM to FITAV 1500 1.7 NM to WARUK 1700 1.3 NM to UDOYE 190° to GUCTE 2000									
*660 1500 1700									
1.2 0.5 2.6 1.3 4.7 NM									
CATEGORY	A		B		C		D		
LPV DA			341-7/8		250 (300-7/8)				
LNAV/VNAV DA			513-1 1/2		422 (500-1 1/2)				
LNAV MDA	500-1		409 (500-1)		500-1 1/8		409 (500-1 1/8)		
CIRCLING	560-1		469 (500-1)		580-1 1/2		660-2		
					489 (500-1 1/2)		569 (600-2)		

SE-4, 03 DEC 2020 to 31 DEC 2020

SE-4, 03 DEC 2020 to 31 DEC 2020