

WAAS CH 93513 W01A	APP CRS 010°	Rwy Idg 6604 TDZE 87 Apt Elev 91
--	------------------------	---

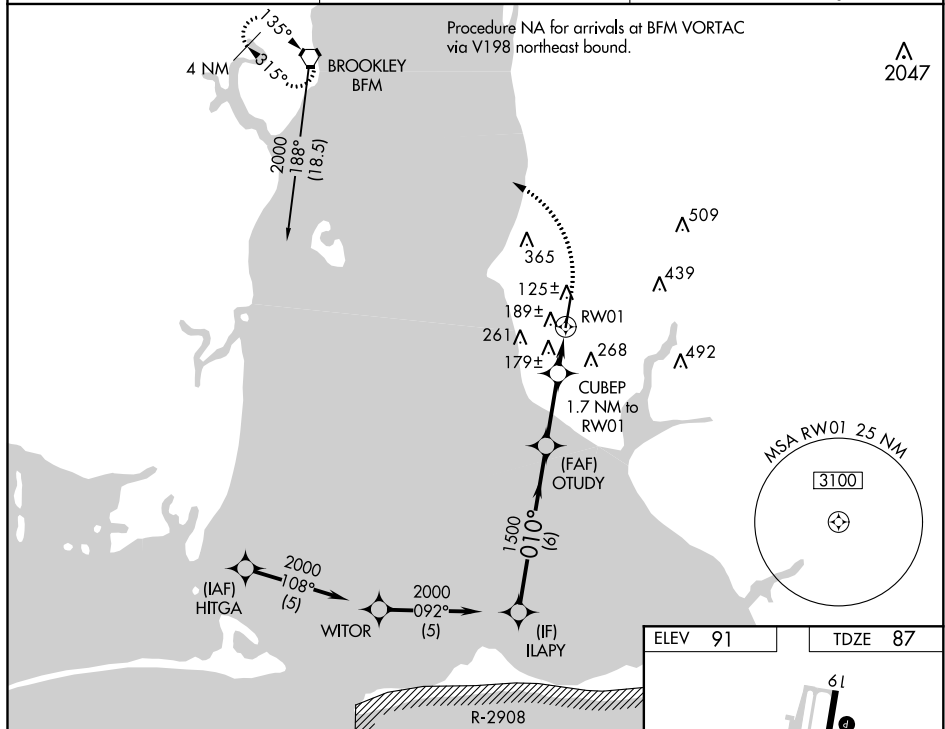
RNAV (GPS) RWY 1
H L SONNY CALLAHAN (CQF)

H L SONNY CALLAHAN (CQF)

- A** Baro-VNAV NA when using Mobile Downtown altimeter setting. For uncompensated Baro-VNAV systems, LNAV/VNAV NA below -15°C (5°F) or above 43°C (109°F). DME/DME RNP-0.3 NA. VDP NA with Mobile Downtown altimeter setting. When local altimeter setting not received, use Mobile Downtown altimeter setting and increase all DA 42 feet and MDA 60 feet and increase LNAV/VNAV all Cats and LNAV Cat C and D visibility ½ mile.

MISSED APPROACH:
Climb to 700 then
climbing left turn to
2000 direct BFM
VORTAC and hold.

AWOS-3PT 118,425	MOBILE APP CON ★ 118.5 269.3	UNICOM 123.0 (CTAF) L
----------------------------	--	--



The diagram illustrates a flight procedure starting at ILAPY, turning North (NA) to OTUDY. Key features include:

- ILAPY**: Initial location.
- Turn NA**: Turn North.
- Altitude 2000**: Starting altitude.
- Distance 6 NM**: Distance from ILAPY to OTUDY.
- OTUDY**: Intermediate location.
- CUBEP**: Maneuver point.
- Altitude 1500**: Altitude at OTUDY.
- Altitude 660**: Altitude at CUBEP.
- Distance 2.6 NM**: Distance from OTUDY to CUBEP.
- Distance 0.7 NM**: Distance from CUBEP to RW01.
- Distance 1 NM**: Distance from CUBEP to the final segment.
- RW01**: Runway 01.
- LNAV only**: Lateral Navigation only.
- BFM**: Banked Flight Maneuver.

CATEGORY	A	B	C	D
LPV DA		287- $\frac{3}{4}$	200 (200- $\frac{3}{4}$)	
LNAV/VNAV DA		475- $1\frac{3}{8}$	388 (400- $1\frac{3}{8}$)	
LNAV MDA		440-1	353 (400-1)	
CIRCLING	560-1	469 (500-1)	580- $1\frac{1}{2}$ 489 (500- $1\frac{1}{2}$)	660-2 569 (600-2)

