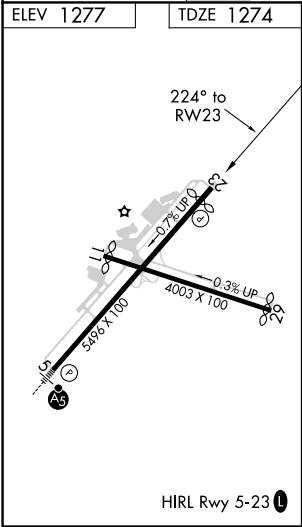
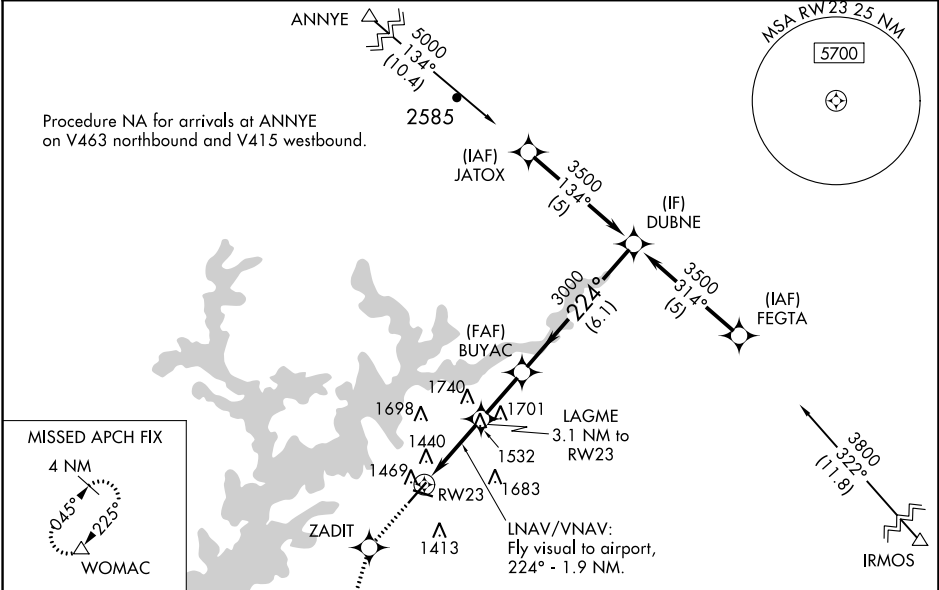


WAAS CH 77605 W23A	APP CRS 224°	Rwy Idg TDZE 1274 Apt Elev 1277
--	------------------------	---

RNAV (GPS) RWY 23
LEE GILMER MEMORIAL (GVL)

RNP APCH.		MISSED APPROACH: Climb to 4000 direct ZADIT and on 200° track to WOMAC and hold, continue climb-in-hold to 4000.	
ASOS 126.475	ATLANTA APP CON★ 132.475 291.1	GCO 121.725	UNICOM 123.075 (CTAF) 0



4000 ↑		ZADIT ✦		tr 200°		WOMAC △		VGSI and RNAV glidepath not coincident (VGSI Angle 3.00/TCH 38).				DUBNE	
LNAV only. LNAV/VNAV: Fly visual to airport, 224° - 1.9 NM.		RW23		LAGME 3.1 NM to RW23		2220		BUYAC		224°		3500	
3.1 NM		2.2 NM		6.1 NM								Procedure Turn NA GP 3.00° TCH 40	
CATEGORY		A		B		C		D					
LPV DA				1722-1¾		448 (500-1¾)							
LNAV/ VNAV DA				1884-2		610 (700-2)							
LNAV MDA		1840-1		566 (600-1)		1840-1½ 566 (600-1½)		1840-1¾ 566 (600-1¾)					
CIRCLING		1880-1		603 (700-1)		1880-1¾ 603 (700-1¾)		2060-2½ 783 (800-2½)					

SE-4, 03 DEC 2020 to 31 DEC 2020

SE-4, 03 DEC 2020 to 31 DEC 2020