

NDB FKV  
**365**

APP CRS  
**045°**

Rwy Idg  
TDZE **1275**  
Apt Elev **1277**

LEE GILMER MEMORIAL (GVL)

NDB RWY 5

19339

⚠

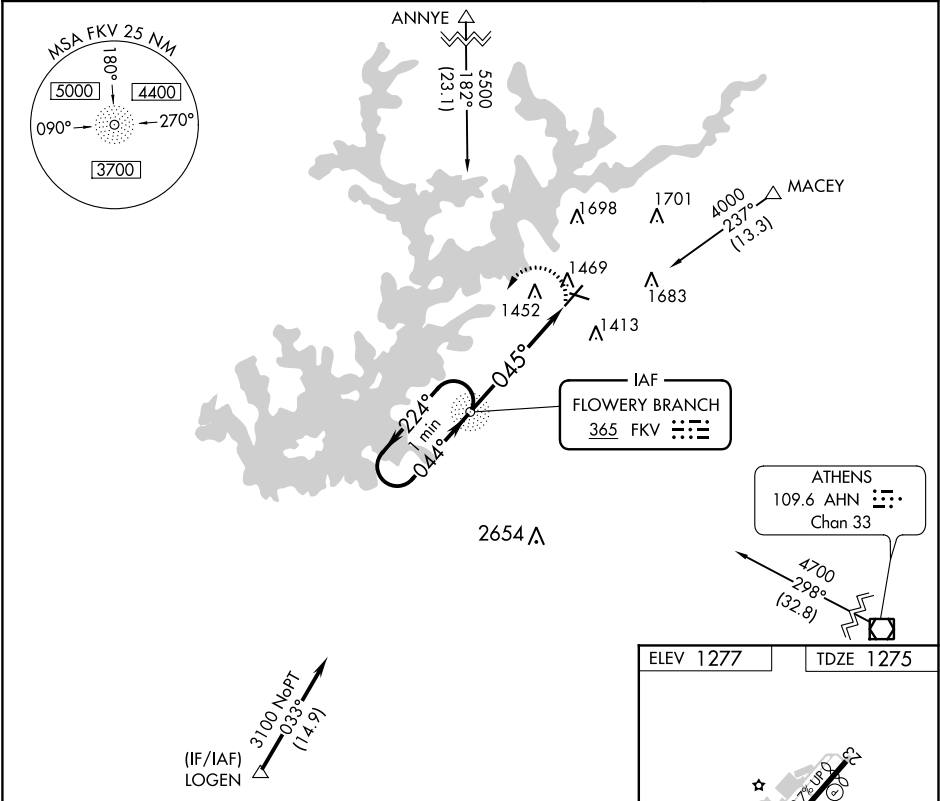
When local altimeter setting not received, use Jefferson altimeter setting and increase all MDA 80 feet, increase S-5 Cats C/D and Circling Cat C/D visibility ¼ SM. Rwy 5 helicopter visibility reduction below ¾ SM NA. Circling Rwy 11, 29 NA at night.

MALS

MISSED APPROACH:

Climbing left turn to 3100  
direct FKV NDB and hold.

ASOS <b>126.475</b>	ATLANTA APP CON★ <b>132.475 291.1</b>	GCO <b>121.725</b>	UNICOM <b>123.075 (CTAF) 0</b>
------------------------	--	-----------------------	-----------------------------------



VGSI and descent angles not coincident  
(VGSI Angle 3.00/TCH 30).

One Minute Holding Pattern

3100

224°

044°

045°

3.31°

TCH 30

5.1 NM

3100

FKV

ELEV 1277

TDZE 1275

045° 5.1 NM from FAF

HIRL Rwy 5-23 0

FAF to MAP 5.1 NM

Knots	60	90	120	150	180
Min:Seq	5:06	3:24	2:33	2:02	1:42

CATEGORY	A	B	C	D
S-5	1820-1	545 (600-1)	1820-1½ 545 (600-1½)	1820-1¾ 545 (600-1¾)
CIRCLING	1820-1	543 (600-1)	1820-1½ 543 (600-1½)	2040-2½ 763 (800-2½)