

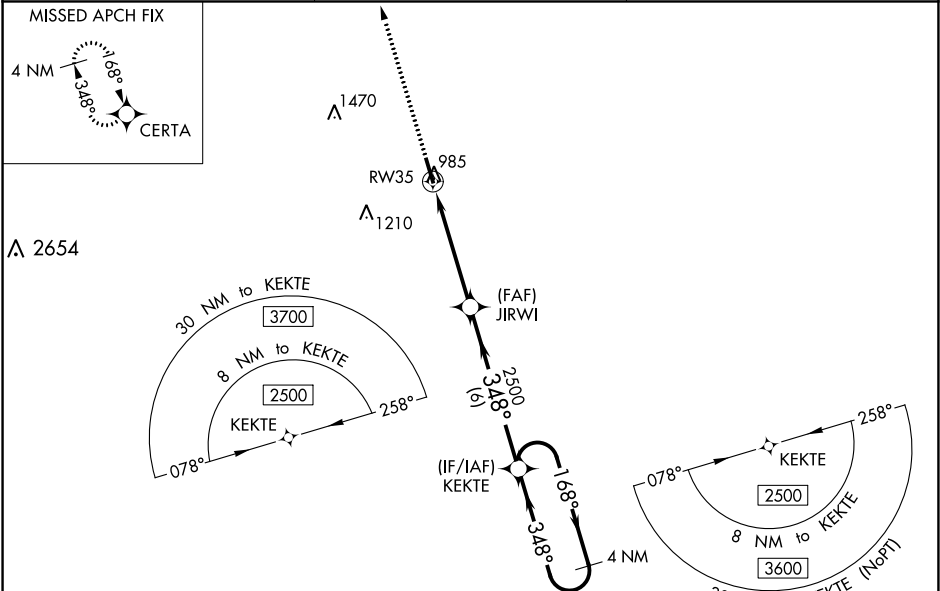
WAAS CH <b>82704</b> <b>W35A</b>	APP CRS <b>348°</b>	Rwy Idg <b>5010</b> TDZE <b>951</b> Apt Elev <b>951</b>
--	------------------------	---

RNAV (GPS) RWY 35  
JACKSON COUNTY (JCA)

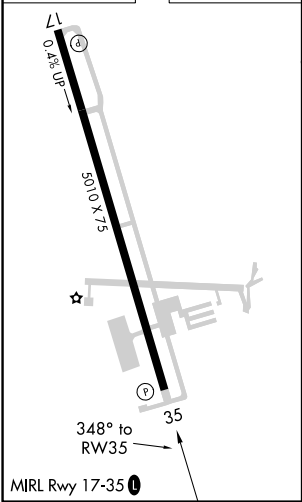
**⚠** For uncompensated Baro-VNAV systems, LNAV/VNAV NA below -16°C (4°F) or above 54°C (130°F). Circling NA for Cat D west of Rwy 17-35. Baro-VNAV and VDP NA when using Winder altimeter setting. DME/DME RNP-0.3 NA. Helicopter visibility reduction below ¾ SM NA. When local altimeter setting not received, use Winder altimeter setting: increase LPV DA to 1232 feet and LNAV/VNAV DA to 1241 feet and all MDA 40 feet; increase LPV visibility all Cats, LNAV/VNAV visibility all Cats, and LNAV Cat C/D visibility ¼ mile; increase Circling Cat C visibility ¼ mile.

**MISSED APPROACH:**  
Climb to 3700 direct CERTA and hold.

AWOS-3PT <b>118.125</b>	ATLANTA APP CON * <b>132.475 291.1</b>	UNICOM <b>122.8 (CTAF) 1</b>
----------------------------	---	---------------------------------



ELEV <b>951</b>	TDZE <b>951</b>
-----------------	-----------------



3700	CERTA	JIRWI	2500	KEKTE	4 NM Holding Pattern
* LNAV only	* 1.1 NM to RW35	* 348°	* 168°	* 2500	GP 3.00° TCH 54
1.1 NM	3.6 NM	6 NM			
CATEGORY	A	B	C	D	
LPV DA	1201-¾	250 (300-¾)			
LNAV/VNAV DA	1210-¾	259 (300-¾)			
LNAV MDA	1340-1	389 (400-1)	1340-1 ½	389 (400-1 ½)	
CIRCLING	1440-1	489 (500-1)	1520-1 ½ 569 (600-1 ½)	1520-2 569 (600-2)	