
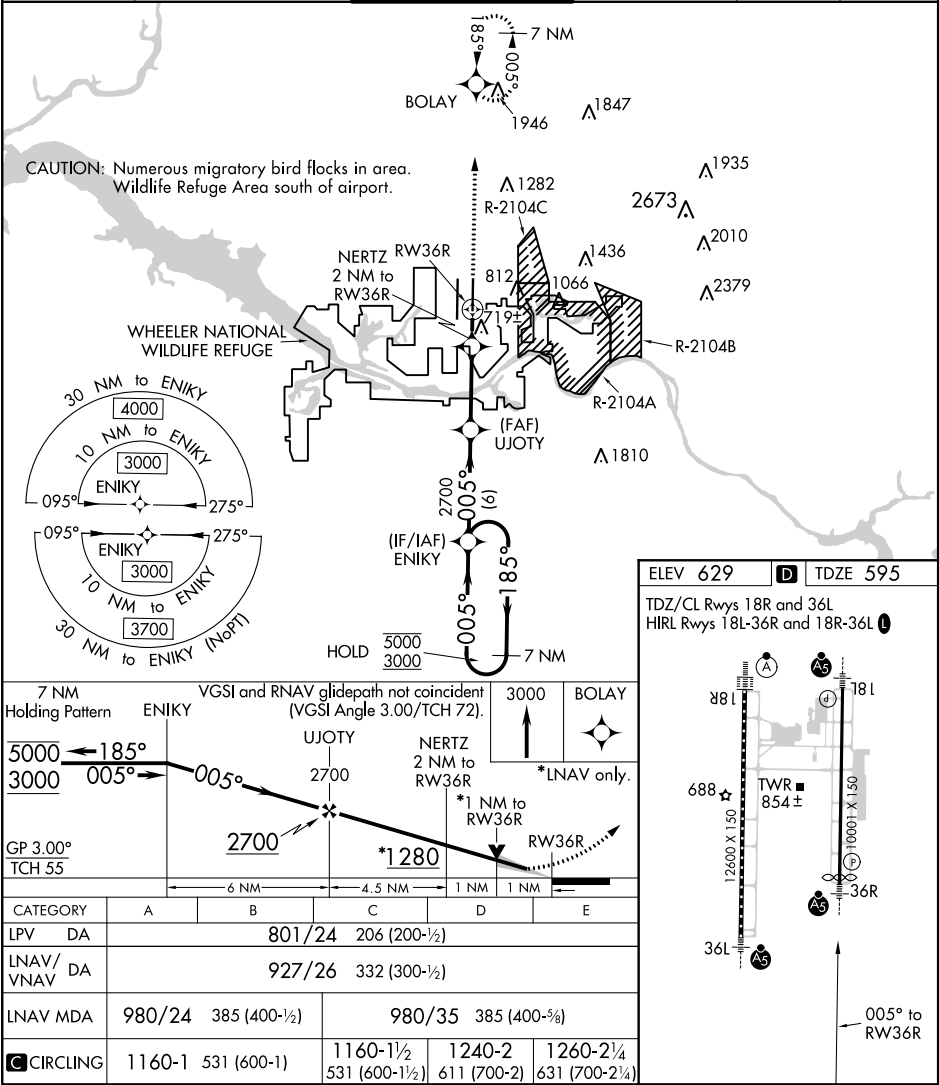


WAAS CH 86606 W36B	APP CRS 005°	Rwy Idg TDZE 595 Apt Elev 629
--	------------------------	---

RNAV (GPS) RWY 36R
HUNTSVILLE INTL-CARL T JONES FIELD (HSV)

RNP APCH.			<div>MALSR</div> <div></div>	MISSED APPROACH: Climb to 3000 direct BOLAY and hold.	
<div><div><div>▼</div><div>▲</div></div><div>ASR</div></div> <div>Circling NA for Cats C/D/E east of Rwy 18L-36R. For uncompensated Baro-VNAV systems, LNAV/VNAV NA below -11°C or above 54°C. Simultaneous approach authorized. LNAV procedure NA during simultaneous operations. Use of FD or AP required during simultaneous operations. For inop ALS increase LPV Cat E visibility to RVR 4000, LNAV/VNAV Cat E visibility to RVR 5000 and LNAV Cat E visibility to RVR 6000.</div>					
ATIS 121.25	HUNTSVILLE APP CON ★ 125.6 354.1	HUNTSVILLE TOWER ★ 127.6 (CTAF) 0 350.35	GND CON 121.9 269.525	CLNC DEL 120.35	UNICOM 122.95



SE-4, 03 DEC 2020 to 31 DEC 2020

SE-4, 03 DEC 2020 to 31 DEC 2020