

WAAS CH 82606 W36A	APP CRS 005°	Rwy Idg 12600 TDZE 615 Apt Elev 629
--	------------------------	--

RNAV (GPS) RWY 36L
HUNTSVILLE INTL-CARL T JONES FIELD (HSV)

RNP APCH.

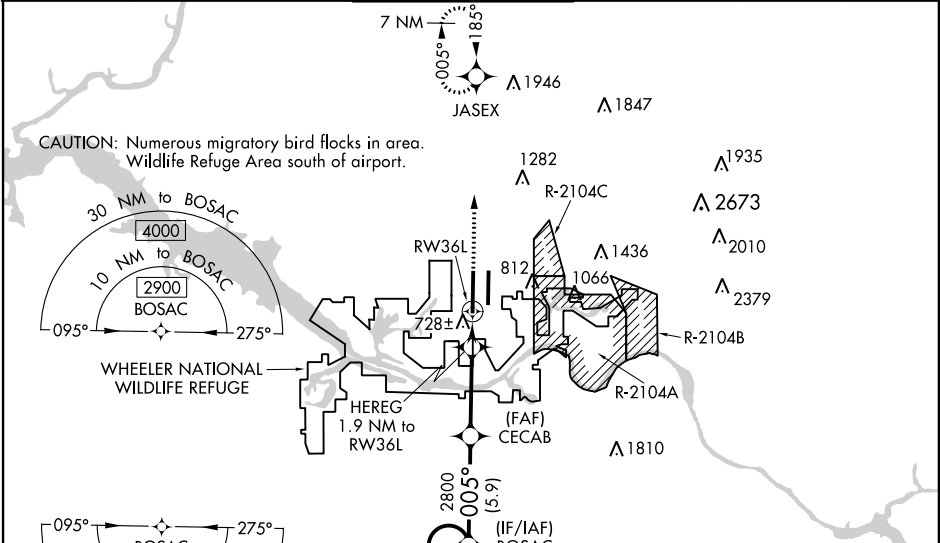
ASR

For uncompensated Baro-VNAV systems, LNAV/VNAV NA below -10°C or above 54°C. For inop ALS, increase LPV Cat E visibility to RVR 4000, LNAV/VNAV all Cats visibility to RVR 4500, and LNAV Cats C/D/E visibility to RVR 5500. Circling NA for Cats C/D/E east of Rwy 18L-36R. Simultaneous approach authorized. LNAV procedure NA during simultaneous operations. Use of FD or AP required during simultaneous operations.

MALS R

MISSED APPROACH: Climb to 3000 direct JASEX and hold.

ATIS 121.25	HUNTSVILLE APP CON ★ 125.6 354.1	HUNTSVILLE TOWER ★ 127.6 (CTAF) 350.35	GND CON 121.9 269.525	CLNC DEL 120.35	UNICOM 122.95
-----------------------	--	--	---------------------------------	---------------------------	-------------------------



GP 3.00° TCH 53

5000 2800 185° 005°

7 NM Holding Pattern BOSAC CECAB 2800

HEREG 1.9 NM to RW36L

*1280

*1 NM to RW36L

RW36L

5.9 NM 4.8 NM 0.9 NM 1 NM

CATEGORY	A	B	C	D	E
LPV DA	815/18		200 (200-½)		
LNAV/VNAV DA	909/24		294 (300-½)		
LNAV MDA	980/24 365 (400-½)		980/35 365 (400-¾)		
CIRCLING	1160-1 531 (600-1)		1160-1½ 531 (600-1½)	1240-2 611 (700-2)	1260-2¼ 631 (700-2¼)

ELEV 629 **D** TDZE 615

TDZ/CL Rws 18R and 36L

HIRL Rws 18L-36R and 18R-36L

81 18L 18R 36R

TWR 854±

36L

12600 X 150

688 150

10000 X 150

005° to RW36L

SE-4, 03 DEC 2020 to 31 DEC 2020

SE-4, 03 DEC 2020 to 31 DEC 2020