

LOC/DME I-JJC <b>109.55</b> Chan <b>32</b> (Y)	APP CRS <b>005°</b>	Rwy Idg <b>9801</b> TDZE <b>595</b> Apt Elev <b>629</b>
--	------------------------	---

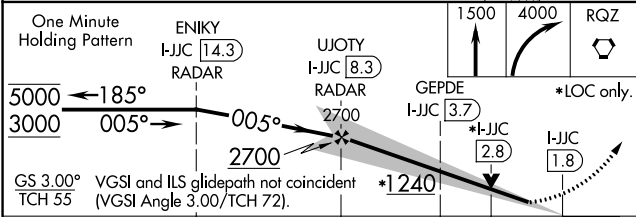
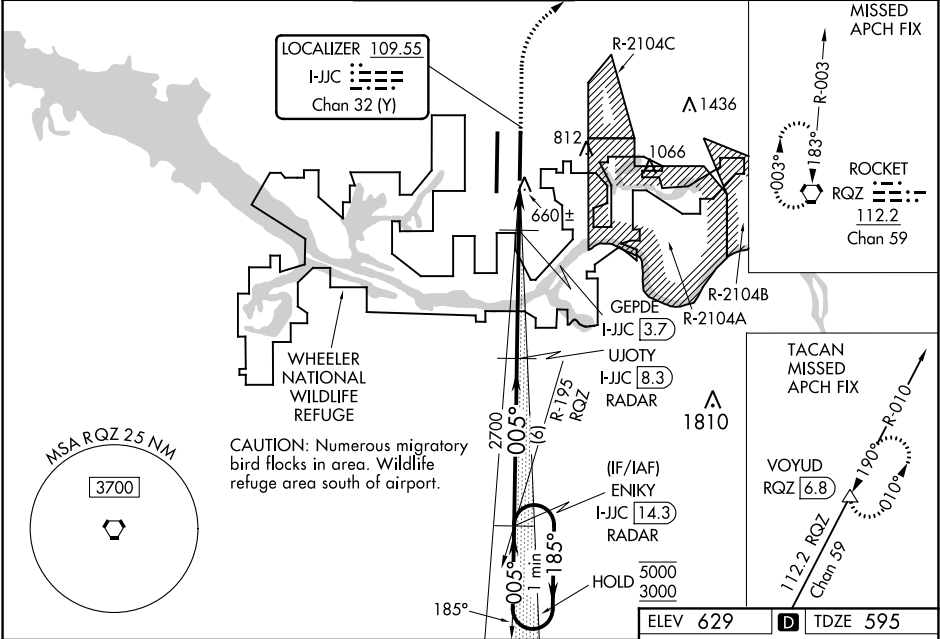
ILS or LOC RWY 36R  
HUNTSVILLE INTL-CARL T JONES FIELD (HSV)

RADAR required for procedure entry. DME or RADAR required for LOC only.

**T** Simultaneous approach authorized. For inop ALS, increase S-ILS 36R Cat E visibility to RVR 4000 and S-LOC 36R Cat E to 1½ SM.  
**A** GEPDE FIX MINIMUMS: Increase S-LOC 36R Cat E visibility to RVR 6000.  
ASR Circling NA for Cat C/D/E east of Rwy 18L-36R.

**MALSR**  
**A5**  
MISSED APPROACH: Climb to 1500 then climbing right turn to 4000 direct RQZ VORTAC and hold. (TACAN aircraft climb to 5000 on RQZ VORTAC R-010 to VOYUD/RQZ 6.8 DME and hold north, left turn, 190° inbound).

ATIS <b>121.25</b>	HUNTSVILLE APP CON ★ <b>125.6 354.1</b>	HUNTSVILLE TOWER ★ <b>127.6 (CTAF) 350.35</b>	GND CON <b>121.9 269.525</b>	CLNC DEL <b>120.35</b>	UNICOM <b>122.95</b>
-----------------------	--	--	---------------------------------	---------------------------	-------------------------



	6 NM		4.6 NM		0.9 NM		1 NM		
CATEGORY	A		B		C		D		E
S-ILS 36R	818/24 223 (200-½)								
S-LOC 36R	1240/24 645 (700-½)			1240-1⅜ 645 (700-1⅜)					
CIRCLING	1240-1 611 (700-1)			1240-1⅞ 611 (700-1⅞)		1240-2 611 (700-2)		1260-2¼ 631 (700-2¼)	
GEPDE FIX MINIMUMS									
S-LOC 36R	980/24 385 (400-½)			980/35 385 (400-⅝)					
CIRCLING	1160-1 531 (600-1)			1160-1½ 531 (600-½)		1240-2 611 (700-2)		1260-2¼ 631 (700-2¼)	

